

Product datasheet for **TA335478**

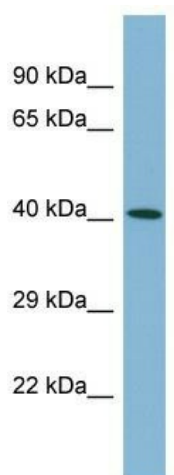
C20orf195 (FNDC11) Rabbit Polyclonal Antibody

Product data:

Product Type:	Primary Antibodies
Applications:	WB
Recommended Dilution:	WB
Reactivity:	Human
Host:	Rabbit
Isotype:	IgG
Clonality:	Polyclonal
Immunogen:	The immunogen for Anti-C20orf195 Antibody is: synthetic peptide directed towards the C-terminal region of Human C20orf195. Synthetic peptide located within the following region: FDRKASAAHQDWARLRWFVTIQPATSEQYELRFRLLDPRRTQQECAQCGVI
Formulation:	Liquid. Purified antibody supplied in 1x PBS buffer with 0.09% (w/v) sodium azide and 2% sucrose. <i>Note that this product is shipped as lyophilized powder to China customers.</i>
Purification:	Affinity Purified
Conjugation:	Unconjugated
Storage:	Store at -20°C as received.
Stability:	Stable for 12 months from date of receipt.
Predicted Protein Size:	34 kDa
Gene Name:	chromosome 20 open reading frame 195
Database Link:	NP_076964 Entrez Gene 79025 Human Q9BVV2
Background:	The exact function of C20orf195 remains unknown.
Synonyms:	MGC5356
Note:	Immunogen Sequence Homology: Human: 100%; Rat: 79%; Mouse: 79%



[View online »](#)

Product images:

Host: Rabbit; Target Name: C20orf195; Sample
Tissue: ACHN Whole cell lysates; Antibody
Dilution: 1.0 ug/ml