

## Product datasheet for **TA335475**

### ALG8 Rabbit Polyclonal Antibody

#### Product data:

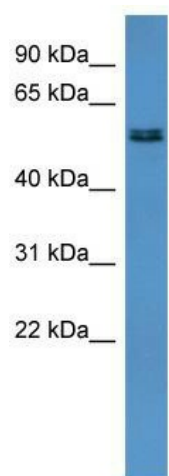
Product Type:	Primary Antibodies
Applications:	WB
Recommended Dilution:	WB
Reactivity:	Rat
Host:	Rabbit
Isotype:	IgG
Clonality:	Polyclonal
Immunogen:	The immunogen for Anti-Alg8 Antibody: synthetic peptide corresponding to a region of Rat. Synthetic peptide located within the following region: LELKLLDPSQIPRASMTSGLVQQSQHTVLPSPSATLICTLIAILPSVF
Formulation:	Liquid. Purified antibody supplied in 1x PBS buffer with 0.09% (w/v) sodium azide and 2% sucrose. <i>Note that this product is shipped as lyophilized powder to China customers.</i>
Purification:	Affinity Purified
Conjugation:	Unconjugated
Storage:	Store at -20°C as received.
Stability:	Stable for 12 months from date of receipt.
Predicted Protein Size:	59 kDa
Gene Name:	ALG8, alpha-1,3-glucosyltransferase
Database Link:	<a href="#">NP_076984</a> <a href="#">Entrez Gene 293129 Rat</a> <a href="#">Q9BVK2</a>
Background:	The function of Alg8 remains unknown.
Synonyms:	CDG1H
Note:	Immunogen Sequence Homology: Dog: 100%; Pig: 100%; Horse: 100%; Human: 100%; Mouse: 100%; Bovine: 100%; Rat: 93%; Guinea pig: 93%; Rabbit: 86%; Zebrafish: 85%
Protein Families:	Transmembrane



[View online »](#)

Protein Pathways: Metabolic pathways, N-Glycan biosynthesis

### Product images:



WB Suggested Anti-Alg8 Antibody Titration: 0.2-1 ug/ml; ELISA Titer: 1: 62500; Positive Control: Rat Heart