

Product datasheet for **TA335474**

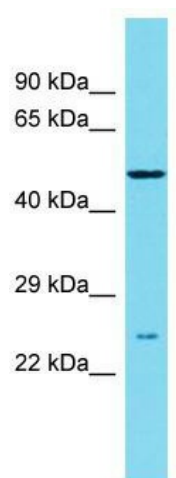
DSCC1 Rabbit Polyclonal Antibody

Product data:

Product Type:	Primary Antibodies
Applications:	WB
Recommended Dilution:	WB
Reactivity:	Human
Host:	Rabbit
Isotype:	IgG
Clonality:	Polyclonal
Immunogen:	The immunogen for Anti-DSCC1 Antibody is: synthetic peptide directed towards the middle region of Human DSCC1. Synthetic peptide located within the following region: MENPYEGPDSQKEKDSNSSKYTTEDLLDQIQASEEEIMTQLQVLNACKIG
Formulation:	Liquid. Purified antibody supplied in 1x PBS buffer with 0.09% (w/v) sodium azide and 2% sucrose. <i>Note that this product is shipped as lyophilized powder to China customers.</i>
Purification:	Affinity Purified
Conjugation:	Unconjugated
Storage:	Store at -20°C as received.
Stability:	Stable for 12 months from date of receipt.
Predicted Protein Size:	44 kDa
Gene Name:	DNA replication and sister chromatid cohesion 1
Database Link:	NP_076999 Entrez Gene 79075 Human Q9BVC3
Background:	CHTF18, CHTF8, and DSCC1 are components of an alternative replication factor C (RFC) complex that loads PCNA onto DNA during S phase of the cell cycle.
Synonyms:	DCC1
Note:	Immunogen Sequence Homology: Human: 100%; Dog: 93%; Pig: 93%; Rat: 90%; Horse: 86%; Bovine: 86%; Mouse: 85%



[View online »](#)

Product images:

Host: Rabbit; Target Name: DSCC1; Sample
Tissue: Placenta lysates; Antibody Dilution: 1.0
ug/ml