

Product datasheet for **TA335473**

Pcyt2 Rabbit Polyclonal Antibody

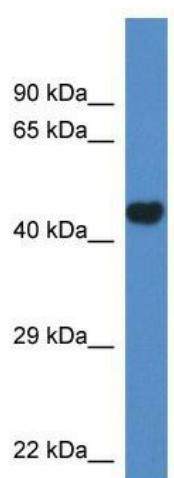
Product data:

Product Type:	Primary Antibodies
Applications:	WB
Recommended Dilution:	WB
Reactivity:	Mouse
Host:	Rabbit
Isotype:	IgG
Clonality:	Polyclonal
Immunogen:	The immunogen for Anti-Pcyt2 Antibody: synthetic peptide corresponding to a region of Mouse. Synthetic peptide located within the following region: FCVHGNDITLTVDGRDITYEEVKQAGRYRECKRTQGVSTTDLVGRMLLVTK
Formulation:	Liquid. Purified antibody supplied in 1x PBS buffer with 0.09% (w/v) sodium azide and 2% sucrose. <i>Note that this product is shipped as lyophilized powder to China customers.</i>
Purification:	Affinity Purified
Conjugation:	Unconjugated
Storage:	Store at -20°C as received.
Stability:	Stable for 12 months from date of receipt.
Predicted Protein Size:	45 kDa
Gene Name:	phosphate cytidyltransferase 2, ethanolamine
Database Link:	NP_077191 Entrez Gene 68671 Mouse Q922E4
Background:	The function of this protein remains unknown.
Synonyms:	ET
Note:	Immunogen Sequence Homology: Dog: 100%; Pig: 100%; Rat: 100%; Horse: 100%; Human: 100%; Mouse: 100%; Bovine: 100%; Zebrafish: 100%; Guinea pig: 100%; Goat: 86%; Yeast: 86%



[View online »](#)

Product images:



WB Suggested Anti-Pcyt2 Antibody; Titration: 1.0 ug/ml; Positive Control: Mouse Heart