

Product datasheet for **TA335471**

FKRP Rabbit Polyclonal Antibody

Product data:

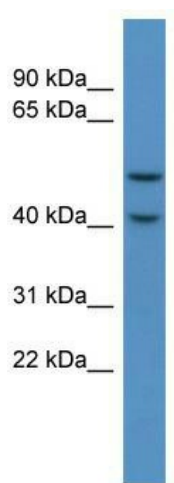
Product Type:	Primary Antibodies
Applications:	WB
Recommended Dilution:	WB
Reactivity:	Mouse
Host:	Rabbit
Isotype:	IgG
Clonality:	Polyclonal
Immunogen:	The immunogen for Anti-Fkrp Antibody: synthetic peptide corresponding to a region of Mouse. Synthetic peptide located within the following region: LDHRQDVEFPEHFLQLVPLPFAGFMAQAPNNYRRFLELKFGPGVIENPE
Formulation:	Liquid. Purified antibody supplied in 1x PBS buffer with 0.09% (w/v) sodium azide and 2% sucrose. <i>Note that this product is shipped as lyophilized powder to China customers.</i>
Purification:	Affinity Purified
Conjugation:	Unconjugated
Storage:	Store at -20°C as received.
Stability:	Stable for 12 months from date of receipt.
Predicted Protein Size:	55 kDa
Gene Name:	fukutin related protein
Database Link:	NP_077277 Entrez Gene 243853 Mouse Q9H9S5
Background:	Fkrp could be a transferase involved in the modification of glycan moieties of alpha-dystroglycan (DAG1).
Synonyms:	LGMD2I; MDC1C; MDDGA5; MDDGB5; MDDGC5
Note:	Immunogen Sequence Homology: Dog: 100%; Pig: 100%; Rat: 100%; Human: 100%; Mouse: 100%; Bovine: 100%; Rabbit: 100%; Guinea pig: 100%; Zebrafish: 79%



[View online »](#)

Protein Families: Transmembrane

Product images:



WB Suggested Anti-Fkrp Antibody Titration: 0.2-1 ug/ml; ELISA Titer: 1: 62500; Positive Control: Mouse Heart