

## Product datasheet for **TA335468**

### **RIPOR1 Rabbit Polyclonal Antibody**

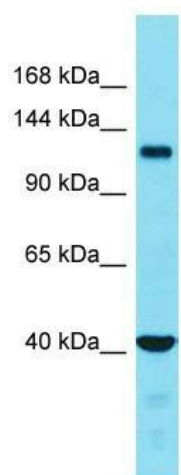
#### **Product data:**

Product Type:	Primary Antibodies
Applications:	WB
Recommended Dilution:	WB
Reactivity:	Human
Host:	Rabbit
Isotype:	IgG
Clonality:	Polyclonal
Immunogen:	The immunogen for Anti-FAM65A Antibody is: synthetic peptide directed towards the N-terminal region of Human FAM65A. Synthetic peptide located within the following region: SCETKDLFAALPQVVAVDINDLGTIKLSLEVTWSPFDKDDQPSAASSVNK
Formulation:	Liquid. Purified antibody supplied in 1x PBS buffer with 0.09% (w/v) sodium azide and 2% sucrose.
Purification:	Affinity Purified
Conjugation:	Unconjugated
Storage:	Store at -20°C as received.
Stability:	Stable for 12 months from date of receipt.
Predicted Protein Size:	131 kDa
Gene Name:	family with sequence similarity 65 member A
Database Link:	<a href="#">NP_078795</a> <a href="#">Entrez Gene 79567 Human</a> <a href="#">Q6ZS17</a>
Background:	The function of this protein remains unknown.
Synonyms:	FLJ13725; KIAA1930
Note:	Immunogen Sequence Homology: Pig: 100%; Rat: 100%; Horse: 100%; Human: 100%; Mouse: 100%; Bovine: 100%; Rabbit: 100%; Dog: 92%; Guinea pig: 92%; Zebrafish: 83%



[View online »](#)

## Product images:



Host: Rabbit; Target Name: FAM65A; Sample  
Tissue: Placenta lysates; Antibody Dilution: 1.0  
ug/ml