

## Product datasheet for **TA335467**

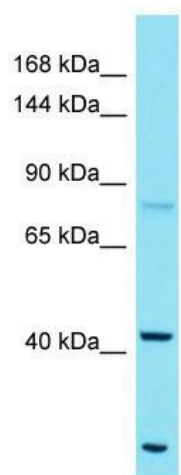
### FAM184A Rabbit Polyclonal Antibody

#### Product data:

|                         |  |
|-------------------------|--|
| Product Type:           | Primary Antibodies   |
| Applications:           | WB   |
| Recommended Dilution:   | WB   |
| Reactivity:             | Human  |
| Host:                   | Rabbit   |
| Isotype:                | IgG  |
| Clonality:              | Polyclonal   |
| Immunogen:              | The immunogen for Anti-FAM184A Antibody is: synthetic peptide directed towards the C-terminal region of Human FAM184A. Synthetic peptide located within the following region: TNFNKVFNSSPTVGVINPLAKQKKKNDKSPTNRFVSVPNLSALES GG VGN |
| Formulation:            | Liquid. Purified antibody supplied in 1x PBS buffer with 0.09% (w/v) sodium azide and 2% sucrose.  |
| Purification:           | Affinity Purified  |
| Conjugation:            | Unconjugated   |
| Storage:                | Store at -20°C as received.  |
| Stability:              | Stable for 12 months from date of receipt.   |
| Predicted Protein Size: | 40 kDa   |
| Gene Name:              | family with sequence similarity 184 member A   |
| Database Link:          | <a href="#">NP_078857</a><br><a href="#">Entrez Gene 79632 Human</a><br><a href="#">Q8NB25</a>   |
| Background:             | The function of this protein remains unknown.  |
| Synonyms:               | C6orf60  |
| Note:                   | Immunogen Sequence Homology: Dog: 100%; Pig: 100%; Rat: 100%; Horse: 100%; Human: 100%; Bovine: 100%; Guinea pig: 100%; Rabbit: 92%; Mouse: 86%  |



[View online »](#)

**Product images:**

Host: Rabbit; Target Name: FAM184A; Sample  
Tissue: ACHN Whole Cell lysates; Antibody  
Dilution: 1.0 ug/ml