

Product datasheet for TA335466

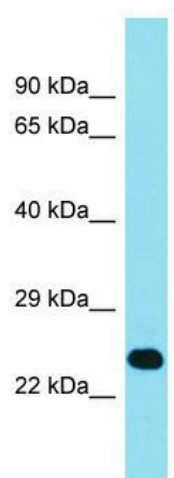
EFCAB1 Rabbit Polyclonal Antibody

Product data:

Product Type:	Primary Antibodies
Applications:	WB
Recommended Dilution:	WB
Reactivity:	Human
Host:	Rabbit
Isotype:	IgG
Clonality:	Polyclonal
Immunogen:	The immunogen for Anti-EFCAB1 Antibody is: synthetic peptide directed towards the middle region of Human EFCAB1. Synthetic peptide located within the following region: EKMKYCFEVDLNGDGFISKEEMFHMLKNSLLKQPSEEDPDEGIKDLVEI
Formulation:	Liquid. Purified antibody supplied in 1x PBS buffer with 0.09% (w/v) sodium azide and 2% sucrose.
Purification:	Affinity Purified
Conjugation:	Unconjugated
Storage:	Store at -20°C as received.
Stability:	Stable for 12 months from date of receipt.
Predicted Protein Size:	23 kDa
Gene Name:	EF-hand calcium binding domain 1
Database Link:	NP_078869 Entrez Gene 79645 Human Q9HAE3
Background:	The function of this protein remains unknown.
Synonyms:	FLJ11767
Note:	Immunogen Sequence Homology: Dog: 100%; Pig: 100%; Rat: 100%; Horse: 100%; Human: 100%; Mouse: 100%; Bovine: 100%; Rabbit: 100%; Guinea pig: 100%; Zebrafish: 92%



[View online »](#)

Product images:

Host: Rabbit; Target Name: EFCAB1; Sample Tissue: RPMI-8226 Whole Cell lysates; Antibody Dilution: 1.0 ug/ml. EFCAB1 is supported by BioGPS gene expression data to be expressed in RPMI 8226