

Product datasheet for TA335464

DHRS12 Rabbit Polyclonal Antibody

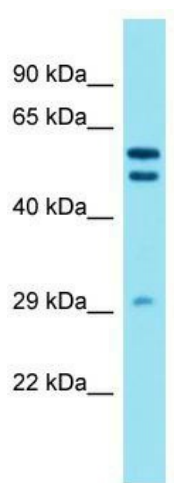
Product data:

Product Type:	Primary Antibodies
Applications:	WB
Recommended Dilution:	WB
Reactivity:	Human
Host:	Rabbit
Isotype:	IgG
Clonality:	Polyclonal
Immunogen:	The immunogen for Anti-DHRS12 Antibody is: synthetic peptide directed towards the middle region of Human DHRS12. Synthetic peptide located within the following region: FKQEHKLHVLINNAGCMVKNKRELTEDGLEKNFAANTLGVYILTGLIPVL
Formulation:	Liquid. Purified antibody supplied in 1x PBS buffer with 0.09% (w/v) sodium azide and 2% sucrose.
Purification:	Affinity Purified
Conjugation:	Unconjugated
Storage:	Store at -20°C as received.
Stability:	Stable for 12 months from date of receipt.
Predicted Protein Size:	30 kDa
Gene Name:	dehydrogenase/reductase 12
Database Link:	NP_078981 Entrez Gene 79758 Human A0PIE2
Background:	This gene encodes a member of the short-chain dehydrogenases/reductases (SDR) family, which has over 46,000 members. Members in this family are enzymes that metabolize many different compounds, such as steroid hormones, prostaglandins, retinoids, lipids and xenobiotics. Alternative splicing results in multiple transcript variants and protein isoforms.
Synonyms:	SDR40C1
Note:	Immunogen Sequence Homology: Human: 100%; Bovine: 100%; Zebrafish: 93%


[View online »](#)

Protein Families: Druggable Genome

Product images:



Host: Rabbit; Target Name: DHRS12; Sample
Tissue: A549 Whole Cell lysates; Antibody
Dilution: 1.0 ug/ml. DHRS12 is supported by
BioGPS gene expression data to be expressed in
A549