

Product datasheet for **TA335463**

GIMAP6 Rabbit Polyclonal Antibody

Product data:

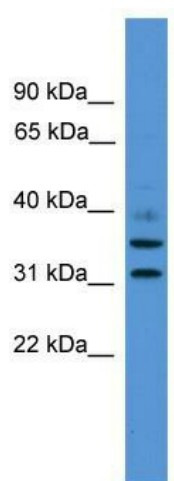
| | |
|-------------------------|--|
| Product Type: | Primary Antibodies |
| Applications: | WB |
| Recommended Dilution: | WB |
| Reactivity: | Human |
| Host: | Rabbit |
| Isotype: | IgG |
| Clonality: | Polyclonal |
| Immunogen: | The immunogen for Anti-GIMAP6 Antibody: synthetic peptide directed towards the C terminal of human GIMAP6. Synthetic peptide located within the following region: GVGVLGHTILVFTRKEDLAGGSLEDYVRETNNQALAWLDVTLARRHCGFN |
| Formulation: | Liquid. Purified antibody supplied in 1x PBS buffer with 0.09% (w/v) sodium azide and 2% sucrose. <i>Note that this product is shipped as lyophilized powder to China customers.</i> |
| Purification: | Affinity Purified |
| Conjugation: | Unconjugated |
| Storage: | Store at -20°C as received. |
| Stability: | Stable for 12 months from date of receipt. |
| Predicted Protein Size: | 32 kDa |
| Gene Name: | GTPase, IMAP family member 6 |
| Database Link: | NP_078987 Entrez Gene 474344 Human Q6P9H5 |
| Background: | This gene encodes a protein belonging to the GTP-binding superfamily and to the immun-associated nucleotide (IAN) subfamily of nucleotide-binding proteins. In humans, IAN subfamily genes are located in a cluster at 7q36.1. Two transcript variants, one protein-coding and the other probably non-protein-coding, have been found for this gene. |
| Synonyms: | IAN-2; IAN-6; IAN2; IAN6 |



[View online »](#)

Note: Immunogen Sequence Homology: Rat: 100%; Human: 100%; Pig: 93%; Horse: 93%; Mouse: 93%; Rabbit: 93%; Guinea pig: 93%; Dog: 86%; Bovine: 86%

Product images:



WB Suggested Anti-GIMAP6 Antibody Titration:
0.2-1 ug/ml; ELISA Titer: 1:312500; Positive
Control: THP-1 cell lysate