

## Product datasheet for **TA335462**

### CLMN Rabbit Polyclonal Antibody

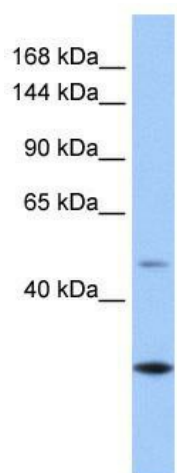
#### Product data:

Product Type:	Primary Antibodies
Applications:	WB
Recommended Dilution:	WB
Reactivity:	Human
Host:	Rabbit
Isotype:	IgG
Clonality:	Polyclonal
Immunogen:	The immunogen for Anti-CLMN Antibody: synthetic peptide directed towards the C terminal of human CLMN. Synthetic peptide located within the following region: LEENVTKESISSKKKEKRKHVDHVESSLFVAPGSVQSSDDLEEDSSDYSI
Formulation:	Liquid. Purified antibody supplied in 1x PBS buffer with 0.09% (w/v) sodium azide and 2% sucrose.
Purification:	Affinity Purified
Conjugation:	Unconjugated
Storage:	Store at -20°C as received.
Stability:	Stable for 12 months from date of receipt.
Predicted Protein Size:	110 kDa
Gene Name:	calmin (calponin-like, transmembrane)
Database Link:	<a href="#">NP_079010</a> <a href="#">Entrez Gene 79789 Human</a> <a href="#">Q96IQ2</a>
Background:	CLMN is a single-pass type IV membrane protein. It contains 1 actin-binding domain and 2 CH (calponin-homology) domains. The exact function of CLMN remains unknown.
Synonyms:	FLJ12383; FLJ43048; KIAA0500; KIAA1188
Note:	Immunogen Sequence Homology: Human: 100%; Yeast: 92%; Pig: 85%; Dog: 77%; Mouse: 77%; Bovine: 77%
Protein Families:	Transmembrane



[View online »](#)

## Product images:



WB Suggested Anti-CLMN Antibody Titration: 0.2-1 ug/ml; Positive Control: Human Liver