

Product datasheet for **TA335461**

CLMN Rabbit Polyclonal Antibody

Product data:

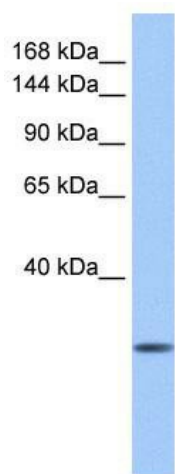
| | |
|-------------------------|--|
| Product Type: | Primary Antibodies |
| Applications: | WB |
| Recommended Dilution: | WB |
| Reactivity: | Human |
| Host: | Rabbit |
| Isotype: | IgG |
| Clonality: | Polyclonal |
| Immunogen: | The immunogen for Anti-CLMN Antibody: synthetic peptide directed towards the N terminal of human CLMN. Synthetic peptide located within the following region: SPSSSLSPGSGGTDSDDSSFPPTAERSVAISVKDQRKAIKALLAWVQRK |
| Formulation: | Liquid. Purified antibody supplied in 1x PBS buffer with 0.09% (w/v) sodium azide and 2% sucrose. <i>Note that this product is shipped as lyophilized powder to China customers.</i> |
| Purification: | Affinity Purified |
| Conjugation: | Unconjugated |
| Storage: | Store at -20°C as received. |
| Stability: | Stable for 12 months from date of receipt. |
| Predicted Protein Size: | 110 kDa |
| Gene Name: | calmin (calponin-like, transmembrane) |
| Database Link: | NP_079010 Entrez Gene 79789 Human Q96IQ2 |
| Background: | CLMN is a single-pass type IV membrane protein. It contains 1 actin-binding domain and 2 CH (calponin-homology) domains. The exact function of CLMN remains unknown. |
| Synonyms: | FLJ12383; FLJ43048; KIAA0500; KIAA1188 |
| Note: | Immunogen Sequence Homology: Dog: 100%; Pig: 100%; Rat: 100%; Horse: 100%; Human: 100%; Mouse: 100%; Bovine: 100%; Guinea pig: 100%; Rabbit: 93% |



[View online »](#)

Protein Families: Transmembrane

Product images:



WB Suggested Anti-CLMN Antibody Titration: 0.2-1 ug/ml; Positive Control: Human Liver