

## Product datasheet for **TA335460**

### FBXO31 Rabbit Polyclonal Antibody

#### Product data:

Product Type:	Primary Antibodies
Applications:	WB
Recommended Dilution:	WB
Reactivity:	Human
Host:	Rabbit
Isotype:	IgG
Clonality:	Polyclonal
Immunogen:	The immunogen for Anti-FBXO31 Antibody: synthetic peptide directed towards the middle region of human FBXO31. Synthetic peptide located within the following region: VAAAEQPAQCGQGQPFVLPVGVSSRNEDYPRTCRMCFYGTGLIAGHGFTS
Formulation:	Liquid. Purified antibody supplied in 1x PBS buffer with 0.09% (w/v) sodium azide and 2% sucrose.
Purification:	Affinity Purified
Conjugation:	Unconjugated
Storage:	Store at -20°C as received.
Stability:	Stable for 12 months from date of receipt.
Predicted Protein Size:	40 kDa
Gene Name:	F-box protein 31
Database Link:	<a href="#">NP_079011</a> <a href="#">Entrez Gene 79791 Human</a> <a href="#">Q5XUX0</a>



[View online »](#)

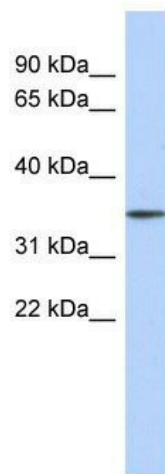
**Background:** FBXO31 is the component of some SCF (SKP1-cullin-F-box) protein ligase complex that plays a central role in G1 arrest following DNA damage. FBXO31 specifically recognizes phosphorylated cyclin-D1 (CCND1), promoting its ubiquitination and degradation by the proteasome, resulting in G1 arrest. FBXO31 may act as a tumor suppressor. Members of the F-box protein family, such as FBXO31, are characterized by an approximately 40-amino acid F-box motif. SCF complexes, formed by SKP1 (MIM 601434), cullin (see CUL1; MIM 603134), and F-box proteins, act as protein-ubiquitin ligases. F-box proteins interact with SKP1 through the F box, and they interact with ubiquitination targets through other protein interaction domains (Jin et al., 2004 [PubMed 15520277]). [supplied by OMIM]

**Synonyms:** FBX14; Fbx31; FBXO14; MRT45; pp2386

**Note:** Immunogen Sequence Homology: Dog: 100%; Human: 100%; Mouse: 100%; Bovine: 100%; Pig: 93%; Rat: 93%; Horse: 93%; Rabbit: 93%; Guinea pig: 93%

**Protein Families:** Druggable Genome

### Product images:



WB Suggested Anti-FBXO31 Antibody Titration:  
0.2-1 ug/ml; ELISA Titer: 1: 1562500; Positive  
Control: Human Stomach