

Product datasheet for **TA335459**

FBXO31 Rabbit Polyclonal Antibody

Product data:

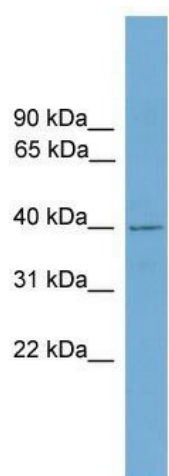
Product Type:	Primary Antibodies
Applications:	WB
Recommended Dilution:	WB
Reactivity:	Human
Host:	Rabbit
Isotype:	IgG
Clonality:	Polyclonal
Immunogen:	The immunogen for Anti-FBXO31 Antibody: synthetic peptide directed towards the middle region of human FBXO31. Synthetic peptide located within the following region: QGPRESQPSPAQPRAEAPSKGPDGTPGEDGGEPGDAVAAAEQPAQCGQGQ
Formulation:	Liquid. Purified antibody supplied in 1x PBS buffer with 0.09% (w/v) sodium azide and 2% sucrose. <i>Note that this product is shipped as lyophilized powder to China customers.</i>
Purification:	Affinity Purified
Conjugation:	Unconjugated
Storage:	Store at -20°C as received.
Stability:	Stable for 12 months from date of receipt.
Predicted Protein Size:	40 kDa
Gene Name:	F-box protein 31
Database Link:	NP_079011 Entrez Gene 79791 Human Q5XUX0
Background:	FBXO31 is the component of some SCF (SKP1-cullin-F-box) protein ligase complex that plays a central role in G1 arrest following DNA damage. FBXO31 specifically recognizes phosphorylated cyclin-D1 (CCND1), promoting its ubiquitination and degradation by the proteasome, resulting in G1 arrest. FBXO31 may act as a tumor suppressor.
Synonyms:	FBX14; Fbx31; FBXO14; MRT45; pp2386
Note:	Immunogen Sequence Homology: Human: 100%



[View online »](#)

Protein Families: Druggable Genome

Product images:



WB Suggested Anti-FBXO31 Antibody Titration:
0.2-1 ug/ml; ELISA Titer: 1: 312500; Positive
Control: COLO205 cell lysate