

Product datasheet for **TA335457**

TAF7L Rabbit Polyclonal Antibody

Product data:

Product Type:	Primary Antibodies
Applications:	WB
Recommended Dilution:	WB
Reactivity:	Human
Host:	Rabbit
Isotype:	IgG
Clonality:	Polyclonal
Immunogen:	The immunogen for Anti-TAF7L Antibody: synthetic peptide directed towards the middle region of human TAF7L. Synthetic peptide located within the following region: QKQIEKKEKLLHKIQNKAQRQKDLIMKVENLTLKNHFQSVLEQLELQEKQ
Formulation:	Liquid. Purified antibody supplied in 1x PBS buffer with 0.09% (w/v) sodium azide and 2% sucrose. <i>Note that this product is shipped as lyophilized powder to China customers.</i>
Purification:	Affinity Purified
Conjugation:	Unconjugated
Storage:	Store at -20°C as received.
Stability:	Stable for 12 months from date of receipt.
Predicted Protein Size:	51 kDa
Gene Name:	TATA-box binding protein associated factor 7 like
Database Link:	NP_079161 Entrez Gene 54457 Human Q5H9L4
Background:	TAF7L gene is similar to a mouse gene that encodes a TATA box binding protein-associated factor, and shows testis-specific expression. This gene is similar to a mouse gene that encodes a TATA box binding protein-associated factor, and shows testis-specific expression.
Synonyms:	CT40; TAF2Q
Note:	Immunogen Sequence Homology: Pig: 100%; Human: 100%; Dog: 92%; Rat: 91%; Mouse: 91%; Bovine: 79%

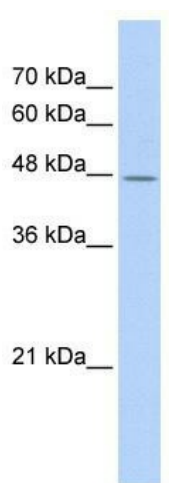


[View online »](#)

Protein Families: Transcription Factors

Protein Pathways: Basal transcription factors

Product images:



WB Suggested Anti-TAF7L Antibody Titration: 0.2-1 ug/ml; ELISA Titer: 1: 312500; Positive Control: Transfected 293T