

## Product datasheet for **TA335456**

### **NIP30 (FAM192A) Rabbit Polyclonal Antibody**

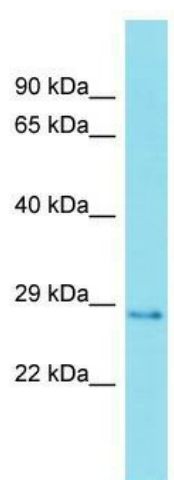
#### **Product data:**

<b>Product Type:</b>	Primary Antibodies
<b>Applications:</b>	WB
<b>Recommended Dilution:</b>	WB
<b>Reactivity:</b>	Human
<b>Host:</b>	Rabbit
<b>Isotype:</b>	IgG
<b>Clonality:</b>	Polyclonal
<b>Immunogen:</b>	The immunogen for Anti-FAM192A Antibody is: synthetic peptide directed towards the C-terminal region of Human FAM192A. Synthetic peptide located within the following region: KPIETKNKFSQAKLLAGAVKHKSSSESGNSVKRLKPDPEPDDKNQEPSSCK
<b>Formulation:</b>	Liquid. Purified antibody supplied in 1x PBS buffer with 0.09% (w/v) sodium azide and 2% sucrose. <i>Note that this product is shipped as lyophilized powder to China customers.</i>
<b>Purification:</b>	Affinity Purified
<b>Conjugation:</b>	Unconjugated
<b>Storage:</b>	Store at -20°C as received.
<b>Stability:</b>	Stable for 12 months from date of receipt.
<b>Predicted Protein Size:</b>	28 kDa
<b>Gene Name:</b>	family with sequence similarity 192 member A
<b>Database Link:</b>	<a href="#">NP_079222</a> <a href="#">Entrez Gene 80011 Human</a> <a href="#">Q9GZU8</a>
<b>Background:</b>	The function of this protein remains unknown.
<b>Synonyms:</b>	C16orf94; CDA018; CDA10; NIP30
<b>Note:</b>	Immunogen Sequence Homology: Dog: 100%; Pig: 100%; Rat: 100%; Horse: 100%; Human: 100%; Mouse: 100%; Bovine: 100%; Rabbit: 100%; Guinea pig: 100%



[View online »](#)

## Product images:



Host: Rabbit; Target Name: FAM192A; Sample  
Tissue: Placenta lysates; Antibody Dilution: 1.0  
ug/ml