

## Product datasheet for **TA335455**

### FAM130A2 (CSRNP3) Rabbit Polyclonal Antibody

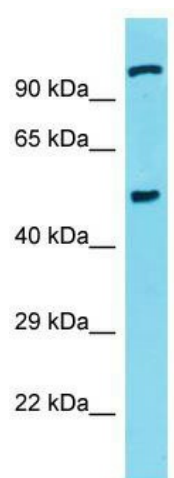
#### Product data:

Product Type:	Primary Antibodies
Applications:	WB
Recommended Dilution:	WB
Reactivity:	Human
Host:	Rabbit
Isotype:	IgG
Clonality:	Polyclonal
Immunogen:	The immunogen for Anti-CSRNP3 Antibody is: synthetic peptide directed towards the N-terminal region of Human CSRNP3. Synthetic peptide located within the following region: KMTKNGTVESEESTLTLDDISDDDIDLNTEVDEYFFLQPLPTKKRRAL
Formulation:	Liquid. Purified antibody supplied in 1x PBS buffer with 0.09% (w/v) sodium azide and 2% sucrose. <i>Note that this product is shipped as lyophilized powder to China customers.</i>
Purification:	Affinity Purified
Conjugation:	Unconjugated
Storage:	Store at -20°C as received.
Stability:	Stable for 12 months from date of receipt.
Predicted Protein Size:	57 kDa
Gene Name:	cysteine and serine rich nuclear protein 3
Database Link:	<a href="#">NP_079245</a> <a href="#">Entrez Gene 80034 Human</a> <a href="#">Q8WYN3</a>
Background:	CSRNP3 binds to the consensus sequence 5'-AGAGTG-3' and has transcriptional activator activity. It plays a role in apoptosis.
Synonyms:	FAM130A2; PPP1R73; TAIP-2; TAIP2
Note:	Immunogen Sequence Homology: Dog: 100%; Pig: 100%; Rat: 100%; Horse: 100%; Human: 100%; Mouse: 100%; Bovine: 100%; Rabbit: 100%; Guinea pig: 100%; Zebrafish: 83%



[View online »](#)

## Product images:



Host: Rabbit; Target Name: CSRNP3; Sample  
Tissue: Jurkat Whole Cell lysates; Antibody  
Dilution: 1.0 ug/ml