

Product datasheet for TA335454

CENPT Rabbit Polyclonal Antibody

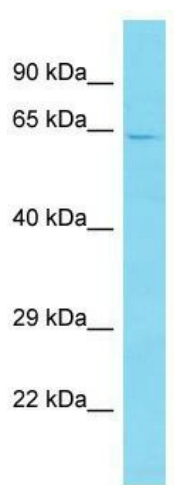
Product data:

Product Type:	Primary Antibodies
Applications:	WB
Recommended Dilution:	WB
Reactivity:	Human
Host:	Rabbit
Isotype:	IgG
Clonality:	Polyclonal
Immunogen:	The immunogen for Anti-CENPT Antibody is: synthetic peptide directed towards the C-terminal region of Human CENPT. Synthetic peptide located within the following region: VRHPPRPRTTGPRPRQDPHKAGLSHYVKLFSFYAKMPMERKALEMVEKCL
Formulation:	Liquid. Purified antibody supplied in 1x PBS buffer with 0.09% (w/v) sodium azide and 2% sucrose.
Purification:	Affinity Purified
Conjugation:	Unconjugated
Storage:	Store at -20°C as received.
Stability:	Stable for 12 months from date of receipt.
Predicted Protein Size:	60 kDa
Gene Name:	centromere protein T
Database Link:	NP_079358 Entrez Gene 80152 Human Q96BT3
Background:	The centromere is a specialized chromatin domain, present throughout the cell cycle, that acts as a platform on which the transient assembly of the kinetochore occurs during mitosis. All active centromeres are characterized by the presence of long arrays of nucleosomes in which CENPA replaces histone H3. CENPT is an additional factor required for centromere assembly.
Synonyms:	C16orf56; CENP-T


[View online »](#)

Note: Immunogen Sequence Homology: Rat: 100%; Human: 100%; Mouse: 93%; Rabbit: 92%; Dog: 86%; Pig: 85%; Bovine: 85%; Guinea pig: 79%

Product images:



Host: Rabbit; Target Name: CENPT; Sample Tissue: HepG2 Whole Cell lysates; Antibody Dilution: 1.0 ug/ml. CENPT is supported by BioGPS gene expression data to be expressed in HepG2