

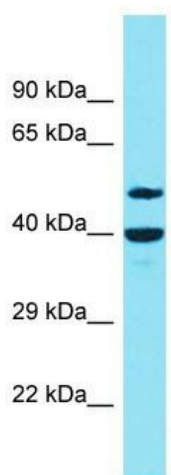
Product datasheet for TA335453

DBF4B Rabbit Polyclonal Antibody

Product data:

Product Type:	Primary Antibodies
Applications:	WB
Recommended Dilution:	WB
Reactivity:	Human
Host:	Rabbit
Isotype:	IgG
Clonality:	Polyclonal
Immunogen:	The immunogen for Anti-DBF4B Antibody is: synthetic peptide directed towards the N-terminal region of Human DBF4B. Synthetic peptide located within the following region: SKEVSYIVSSRREVKAESSGKSHRGCPSPSPSEVRVETSAMVDPKGSHPR
Formulation:	Liquid. Purified antibody supplied in 1x PBS buffer with 0.09% (w/v) sodium azide and 2% sucrose.
Purification:	Affinity Purified
Conjugation:	Unconjugated
Storage:	Store at -20°C as received.
Stability:	Stable for 12 months from date of receipt.
Predicted Protein Size:	47 kDa
Gene Name:	DBF4 zinc finger B
Database Link:	NP_079380 Entrez Gene 80174 Human Q8NFT6
Background:	This gene encodes a regulator of the cell division cycle 7 homolog (<i>S. cerevisiae</i>) protein, a serine-threonine kinase which links cell cycle regulation to genome duplication. This protein localizes to the nucleus and, in complex with the cell division cycle 7 homolog (<i>S. cerevisiae</i>) protein, may facilitate M phase progression.
Synonyms:	ASKL1; CHIFB; DRF1; ZDBF1B
Note:	Immunogen Sequence Homology: Human: 100%; Horse: 86%; Pig: 79%


[View online »](#)

Product images:


Host: Rabbit

Target Name: DBF4B

Sample Tissue: NCI-H226 Cell Lysate

Antibody Dilution: 1.0 µg/ml

Host: Rabbit; Target Name: DBF4B; Sample Tissue: NCI-H226 Whole Cell lysates; Antibody Dilution: 1.0 ug/ml