

Product datasheet for **TA335451**

SIK3 Rabbit Polyclonal Antibody

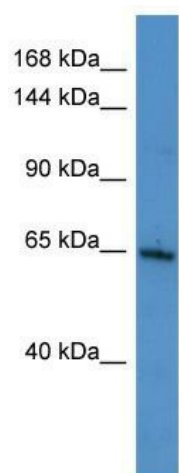
Product data:

Product Type:	Primary Antibodies
Applications:	WB
Recommended Dilution:	WB
Reactivity:	Human
Host:	Rabbit
Isotype:	IgG
Clonality:	Polyclonal
Immunogen:	The immunogen for Anti-SIK3 Antibody is: synthetic peptide directed towards the C-terminal region of Human SIK3. Synthetic peptide located within the following region: SDAVLSQSSLMGSSQQFQDGENEECGASLGGHEHPDLSDGSQHLNSSCYPS
Formulation:	Liquid. Purified antibody supplied in 1x PBS buffer with 0.09% (w/v) sodium azide and 2% sucrose. <i>Note that this product is shipped as lyophilized powder to China customers.</i>
Purification:	Affinity Purified
Conjugation:	Unconjugated
Storage:	Store at -20°C as received.
Stability:	Stable for 12 months from date of receipt.
Predicted Protein Size:	65 kDa
Gene Name:	SIK family kinase 3
Database Link:	NP_079440 Entrez Gene 23387 Human Q9Y2K2
Background:	The function of KIAA0999 remains unknown.
Synonyms:	L19; QSK; SIK-3
Note:	Immunogen Sequence Homology: Human: 100%; Dog: 93%; Pig: 93%; Horse: 93%; Bovine: 93%; Guinea pig: 93%; Rat: 86%; Mouse: 86%
Protein Families:	Druggable Genome, Protein Kinase



[View online »](#)

Product images:



Host: Rabbit; Target Name: SIK3; Sample Tissue: MCF7 Whole Cell lysates; Antibody Dilution: 1.0 ug/ml