

Product datasheet for **TA335450**

SIK3 Rabbit Polyclonal Antibody

Product data:

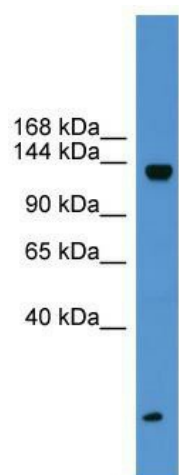
Product Type:	Primary Antibodies
Applications:	WB
Recommended Dilution:	WB
Reactivity:	Human
Host:	Rabbit
Isotype:	IgG
Clonality:	Polyclonal
Immunogen:	The immunogen for Anti-SIK3 Antibody: synthetic peptide directed towards the middle region of human SIK3. Synthetic peptide located within the following region: LHAQQLLRPRGPSPLVTMPAVPAVTPVDEESSDGE PDQEAVQSSTYKD
Formulation:	Liquid. Purified antibody supplied in 1x PBS buffer with 0.09% (w/v) sodium azide and 2% sucrose. <i>Note that this product is shipped as lyophilized powder to China customers.</i>
Purification:	Affinity Purified
Conjugation:	Unconjugated
Storage:	Store at -20°C as received.
Stability:	Stable for 12 months from date of receipt.
Predicted Protein Size:	139 kDa
Gene Name:	SIK family kinase 3
Database Link:	NP_079440 Entrez Gene 23387 Human Q9Y2K2
Background:	The function of SIK3 remains unknown.
Synonyms:	L19; QSK; SIK-3
Note:	Immunogen Sequence Homology: Dog: 100%; Pig: 100%; Rat: 100%; Horse: 100%; Human: 100%; Mouse: 100%; Bovine: 100%; Rabbit: 100%; Guinea pig: 100%; Zebrafish: 79%; Yeast: 75%



[View online »](#)

Protein Families: Druggable Genome, Protein Kinase

Product images:



WB Suggested Anti-SIK3 Antibody Titration: 0.2-1 ug/ml; ELISA Titer: 1: 12500; Positive Control: NCI-H226 cell lysate. There is BioGPS gene expression data showing that SIK3 is expressed in NCIH226