

## Product datasheet for **TA335449**

### BTBD1 Rabbit Polyclonal Antibody

#### Product data:

Product Type:	Primary Antibodies
Applications:	WB
Recommended Dilution:	WB
Reactivity:	Human
Host:	Rabbit
Isotype:	IgG
Clonality:	Polyclonal
Immunogen:	The immunogen for Anti-BTBD1 Antibody: synthetic peptide directed towards the N terminal of human BTBD1. Synthetic peptide located within the following region: LPLQREPLYNWQATKASLKERFAFLFNSELLSDVRFVLGKGRGAAAAGGP
Formulation:	Liquid. Purified antibody supplied in 1x PBS buffer with 0.09% (w/v) sodium azide and 2% sucrose. <i>Note that this product is shipped as lyophilized powder to China customers.</i>
Purification:	Affinity Purified
Conjugation:	Unconjugated
Storage:	Store at -20°C as received.
Stability:	Stable for 12 months from date of receipt.
Predicted Protein Size:	53 kDa
Gene Name:	BTB domain containing 1
Database Link:	<a href="#">NP_079514</a> <a href="#">Entrez Gene 53339 Human Q9H0C5</a>



[View online »](#)

**Background:**

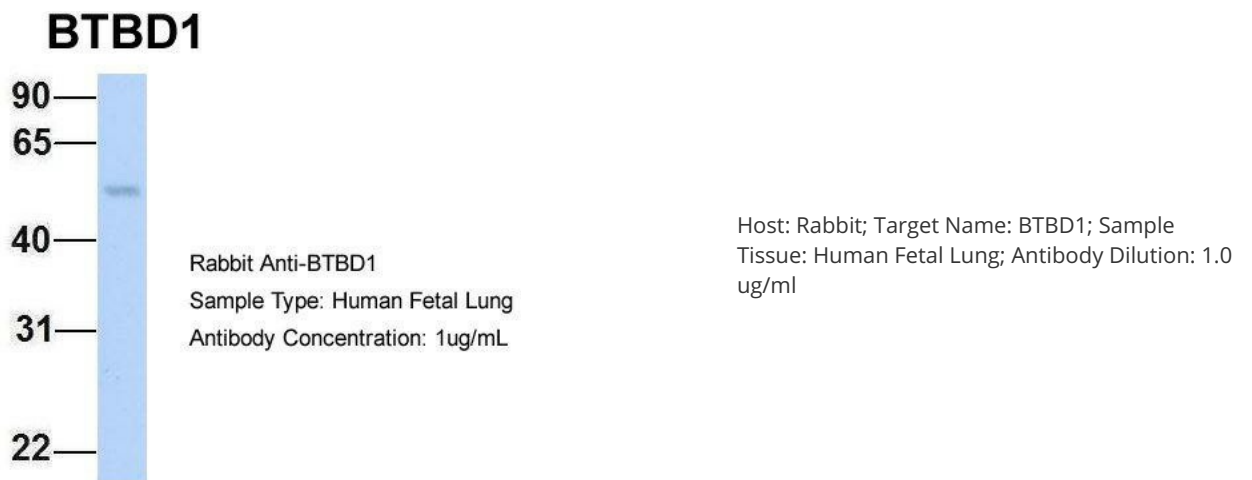
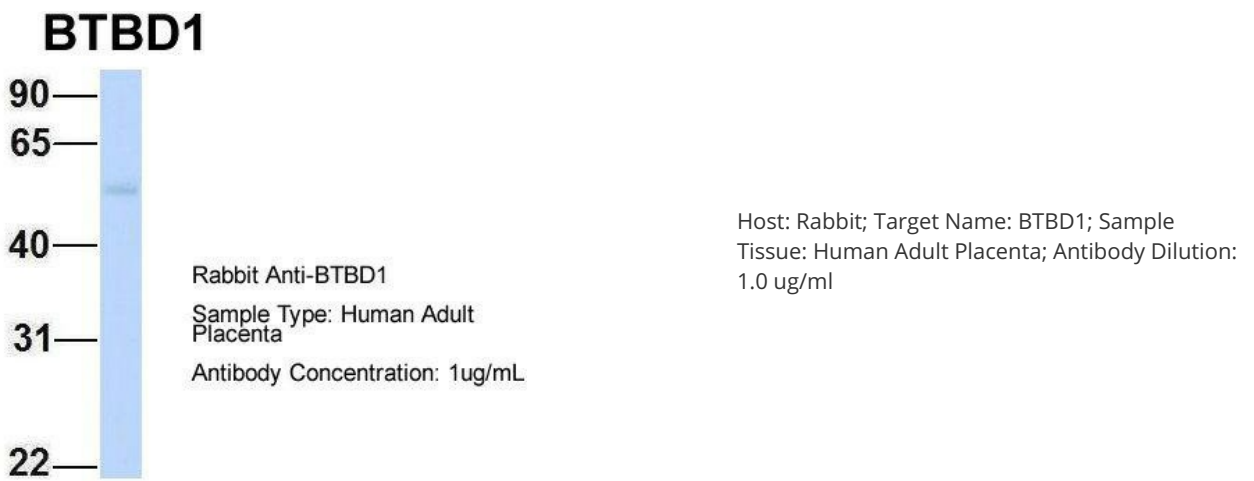
The C-terminus of BTBD1 binds topoisomerase I. The N-terminus contains a proline-rich region and a BTB/POZ domain (broad-complex, Tramtrack and bric a brac/Pox virus and Zinc finger), both of which are typically involved in protein-protein interactions. Subcellularly, the protein localizes to cytoplasmic bodies. The C-terminus of the protein encoded by this gene binds topoisomerase I. The N-terminus contains a proline-rich region and a BTB/POZ domain (broad-complex, Tramtrack and bric a brac/Pox virus and Zinc finger), both of which are typically involved in protein-protein interactions. Subcellularly, the protein localizes to cytoplasmic bodies. Alternative splicing results in multiple transcript variants encoding different isoforms.

**Synonyms:**

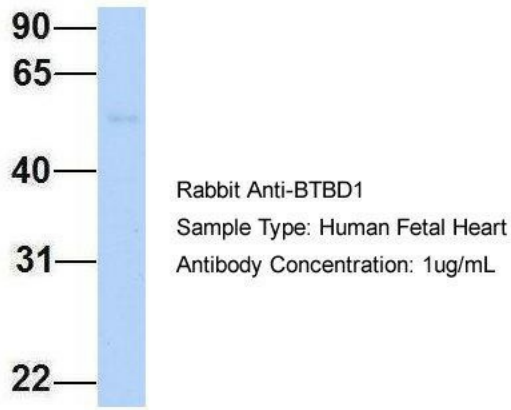
C15orf1; NS5ATP8

**Note:**

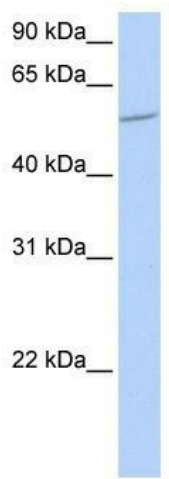
Immunogen Sequence Homology: Pig: 100%; Rat: 100%; Human: 100%; Mouse: 100%; Bovine: 100%; Guinea pig: 100%

**Product images:**


# BTBD1



Host: Rabbit; Target Name: BTBD1; Sample Tissue: Human Fetal Heart; Antibody Dilution: 1.0 ug/ml



WB Suggested Anti-BTBD1 Antibody Titration: 0.2-1 ug/ml; ELISA Titer: 1:312500; Positive Control: 721\_B cell lysate BTBD1 is supported by BioGPS gene expression data to be expressed in 721\_B