

## Product datasheet for **TA335448**

### Asrgl1 Rabbit Polyclonal Antibody

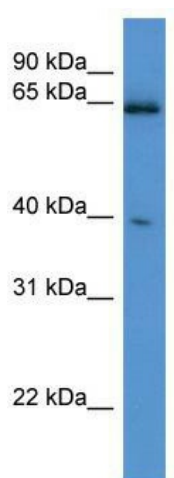
#### Product data:

Product Type:	Primary Antibodies
Applications:	WB
Recommended Dilution:	WB
Reactivity:	Mouse
Host:	Rabbit
Isotype:	IgG
Clonality:	Polyclonal
Immunogen:	The immunogen for Anti-Asrgl1 Antibody: synthetic peptide corresponding to a region of Mouse. Synthetic peptide located within the following region: ALFHVEQGKTVEEAAQLALDYMKSKLKGLGGLILVNKTGDWVAKWTSASM
Formulation:	Liquid. Purified antibody supplied in 1x PBS buffer with 0.09% (w/v) sodium azide and 2% sucrose. <i>Note that this product is shipped as lyophilized powder to China customers.</i>
Purification:	Affinity Purified
Conjugation:	Unconjugated
Storage:	Store at -20°C as received.
Stability:	Stable for 12 months from date of receipt.
Predicted Protein Size:	36 kDa
Gene Name:	asparaginase like 1
Database Link:	<a href="#">NP_079886</a> <a href="#">Entrez Gene 66514 Mouse</a> <a href="#">Q8COM9</a>
Background:	Asrgl1 acts in asparagine catabolism. Asrgl1 may be involved in astroglial production of L-aspartate, which can act as an excitatory neurotransmitter in some brain regions.
Synonyms:	ALP; ALP1; CRASH; FLJ22316
Note:	Immunogen Sequence Homology: Human: 100%; Mouse: 86%; Rabbit: 86%; Horse: 85%; Pig: 80%; Guinea pig: 80%; Rat: 79%; Zebrafish: 79%



[View online »](#)

## Product images:



WB Suggested Anti-Asrgl1 Antibody Titration: 0.2-1 ug/ml; ELISA Titer: 1: 312500; Positive Control: Mouse Brain