

Product datasheet for **TA335446**

ARHGAP28 Rabbit Polyclonal Antibody

Product data:

Product Type:	Primary Antibodies
Applications:	WB
Recommended Dilution:	WB
Reactivity:	Human
Host:	Rabbit
Isotype:	IgG
Clonality:	Polyclonal
Immunogen:	The immunogen for Anti-ARHGAP28 Antibody: synthetic peptide directed towards the C terminal of human ARHGAP28. Synthetic peptide located within the following region: AKFQYENRILHWQRAALSFLNGKWWKKEREESTETNRSPKHFVFLFTIGLD
Formulation:	Liquid. Purified antibody supplied in 1x PBS buffer with 0.09% (w/v) sodium azide and 2% sucrose. <i>Note that this product is shipped as lyophilized powder to China customers.</i>
Purification:	Affinity Purified
Conjugation:	Unconjugated
Storage:	Store at -20°C as received.
Stability:	Stable for 12 months from date of receipt.
Predicted Protein Size:	62 kDa
Gene Name:	Rho GTPase activating protein 28
Database Link:	NP_109597 Entrez Gene 79822 Human
Background:	ARHGAP28 contains 1 Rho-GAP domain. ARHGAP28 is a GTPase activator for the Rho-type GTPases by converting them to an inactive GDP-bound state.
Synonyms:	DKFZp686A2038; FLJ10312; Rho GTPase activating protein 28
Note:	Immunogen Sequence Homology: Human: 100%



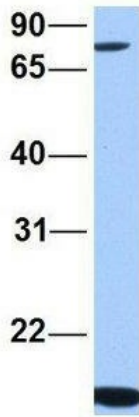
[View online »](#)

Product images:



WB Suggested Anti-ARHGAP28 Antibody Titration: 0.2-1 ug/ml; Positive Control: Human Lung

ARHGAP28



Rabbit Anti-ARHGAP28
 Sample Type: Human 721_B
 Antibody Concentration: 1ug/mL

Host: Rabbit; Target Name: ARHGAP28; Sample Tissue: Human 721_B; Antibody Dilution: 1.0 ug/ml. ARHGAP28 is supported by BioGPS gene expression data to be expressed in 721_B