

## Product datasheet for **TA335445**

### ATG16L1 Rabbit Polyclonal Antibody

#### Product data:

Product Type:	Primary Antibodies
Applications:	WB
Recommended Dilution:	WB
Reactivity:	Human
Host:	Rabbit
Isotype:	IgG
Clonality:	Polyclonal
Immunogen:	The immunogen for Anti-ATG16L1 Antibody: synthetic peptide directed towards the middle region of human ATG16L1. Synthetic peptide located within the following region: TSPVRAISRAATKRLSQPAGGLLDSITNIFGRRSVSSFPVPQDNVDTHPG
Formulation:	Liquid. Purified antibody supplied in 1x PBS buffer with 0.09% (w/v) sodium azide and 2% sucrose. <i>Note that this product is shipped as lyophilized powder to China customers.</i>
Purification:	Affinity Purified
Conjugation:	Unconjugated
Storage:	Store at -20°C as received.
Stability:	Stable for 12 months from date of receipt.
Predicted Protein Size:	68 kDa
Gene Name:	autophagy related 16 like 1
Database Link:	<a href="#">NP_110430</a> <a href="#">Entrez Gene 55054 Human Q676U5</a>



[View online »](#)

**Background:**

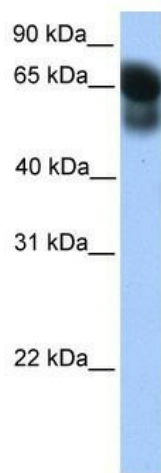
Autophagy is the major intracellular degradation system delivering cytoplasmic components to lysosomes, and it accounts for degradation of most long-lived proteins and some organelles. Cytoplasmic constituents, including organelles, are sequestered into double-membraned autophagosomes, which subsequently fuse with lysosomes. ATG16L1 is a component of a large protein complex essential for autophagy. Autophagy is the major intracellular degradation system delivering cytoplasmic components to lysosomes, and it accounts for degradation of most long-lived proteins and some organelles. Cytoplasmic constituents, including organelles, are sequestered into double-membraned autophagosomes, which subsequently fuse with lysosomes. ATG16L1 is a component of a large protein complex essential for autophagy (Mizushima et al., 2003 [PubMed 12665549]). [supplied by OMIM]

**Synonyms:**

APG16L; ATG16A; ATG16L; IBD10; WDR30

**Note:**

Immunogen Sequence Homology: Dog: 100%; Pig: 100%; Rat: 100%; Horse: 100%; Human: 100%; Mouse: 100%; Bovine: 100%; Rabbit: 100%; Guinea pig: 93%

**Product images:**

WB Suggested Anti-ATG16L1 Antibody Titration:  
0.2-1 ug/ml; Positive Control: Human Lung