

Product datasheet for **TA335444**

FAM130A1 (CSRNP2) Rabbit Polyclonal Antibody

Product data:

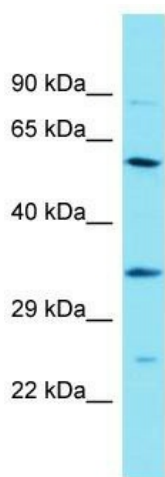
Product Type:	Primary Antibodies
Applications:	WB
Recommended Dilution:	WB
Reactivity:	Human
Host:	Rabbit
Isotype:	IgG
Clonality:	Polyclonal
Immunogen:	The immunogen for Anti-CSRNP2 Antibody is: synthetic peptide directed towards the C-terminal region of Human CSRNP2. Synthetic peptide located within the following region: PAALCKSEVGKTPTLEALLPEDCNPEEPENEDFHPSPSSLPFRDNEE
Formulation:	Liquid. Purified antibody supplied in 1x PBS buffer with 0.09% (w/v) sodium azide and 2% sucrose. <i>Note that this product is shipped as lyophilized powder to China customers.</i>
Purification:	Affinity Purified
Conjugation:	Unconjugated
Storage:	Store at -20°C as received.
Stability:	Stable for 12 months from date of receipt.
Predicted Protein Size:	59 kDa
Gene Name:	cysteine and serine rich nuclear protein 2
Database Link:	NP_110436 Entrez Gene 81566 Human Q9H175
Background:	The protein encoded by this gene belongs to the CSRNP family of nuclear proteins that share conserved regions, including cysteine- and serine- rich regions, a basic domain, a transcriptional activation domain, and bind the sequence 'AGAGTG', thus have the hallmark of transcription factors. Studies in mice suggest that these genes may have redundant functions. Alternatively spliced transcript variants have been found for this gene.
Synonyms:	C12orf2; C12orf22; FAM130A1; PPP1R72; TAIP-12



[View online »](#)

Note: Immunogen Sequence Homology: Human: 100%; Pig: 93%; Horse: 93%; Guinea pig: 93%; Rat: 86%; Dog: 85%; Bovine: 85%; Rabbit: 79%; Sheep: 77%

Product images:



Host: Rabbit

Target Name: CSRNP2

Sample Tissue: RPMI-8226 Cell Lysate

Antibody Dilution: 1.0 μ g/ml

Host: Rabbit; Target Name: CSRNP2; Sample Tissue: RPMI-8226 Whole Cell lysates; Antibody Dilution: 1.0 ug/ml