

Product datasheet for TA335442

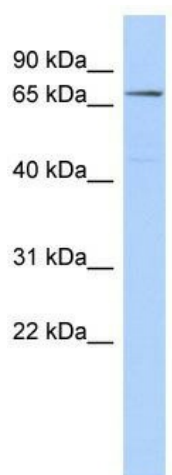
CLPB Rabbit Polyclonal Antibody

Product data:

Product Type:	Primary Antibodies
Applications:	WB
Recommended Dilution:	WB
Reactivity:	Human
Host:	Rabbit
Isotype:	IgG
Clonality:	Polyclonal
Immunogen:	The immunogen for Anti-CLPB Antibody: synthetic peptide directed towards the middle region of human CLPB. Synthetic peptide located within the following region: ELIQLVNKELNFWAKRAKQRHNITLLWDREVADVLVDGYNVHYGARSIKH
Formulation:	Liquid. Purified antibody supplied in 1x PBS buffer with 0.09% (w/v) sodium azide and 2% sucrose. <i>Note that this product is shipped as lyophilized powder to China customers.</i>
Purification:	Affinity Purified
Conjugation:	Unconjugated
Storage:	Store at -20°C as received.
Stability:	Stable for 12 months from date of receipt.
Predicted Protein Size:	78 kDa
Gene Name:	ClpB homolog, mitochondrial AAA ATPase chaperonin
Database Link:	NP_110440 Entrez Gene 81570 Human Q9H078
Background:	CLPB may function as a regulatory ATPase and be related to secretion/protein trafficking process.
Synonyms:	ANKCLB; HSP78; MEGCANN; MGCA7; SKD3
Note:	Immunogen Sequence Homology: Dog: 100%; Pig: 100%; Rat: 100%; Horse: 100%; Human: 100%; Mouse: 100%; Rabbit: 100%; Guinea pig: 100%; Bovine: 93%



[View online »](#)

Product images:

WB Suggested Anti-CLPB Antibody Titration: 0.2-1 ug/ml; ELISA Titer: 1: 312500; Positive Control: COLO205 cell lysate. CLPB is supported by BioGPS gene expression data to be expressed in COLO205