

## Product datasheet for **TA335441**

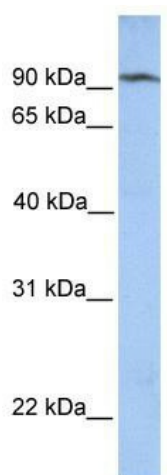
### CLPB Rabbit Polyclonal Antibody

#### Product data:

Product Type:	Primary Antibodies
Applications:	WB
Recommended Dilution:	WB
Reactivity:	Human
Host:	Rabbit
Isotype:	IgG
Clonality:	Polyclonal
Immunogen:	The immunogen for Anti-CLPB Antibody: synthetic peptide directed towards the N terminal of human CLPB. Synthetic peptide located within the following region: QGGRFDTKLAAATWGRLPGPEETLPGQDSWNGVPSRAGLGMCAALAAALV
Formulation:	Liquid. Purified antibody supplied in 1x PBS buffer with 0.09% (w/v) sodium azide and 2% sucrose. <i>Note that this product is shipped as lyophilized powder to China customers.</i>
Purification:	Affinity Purified
Conjugation:	Unconjugated
Storage:	Store at -20°C as received.
Stability:	Stable for 12 months from date of receipt.
Predicted Protein Size:	78 kDa
Gene Name:	ClpB homolog, mitochondrial AAA ATPase chaperonin
Database Link:	<a href="#">NP_110440</a> <a href="#">Entrez Gene 81570 Human</a> <a href="#">Q9H078</a>
Background:	CLPB belongs to the clpA/clpB family. It contains 4 ANK repeats. CLPB may function as a regulatory ATPase and be related to secretion/protein trafficking process.
Synonyms:	ANKCLB; HSP78; MEGCANN; MGCA7; SKD3
Note:	Immunogen Sequence Homology: Human: 100%; Dog: 93%; Horse: 93%; Rat: 92%; Mouse: 92%; Bovine: 86%; Rabbit: 85%; Pig: 77%



[View online »](#)

**Product images:**

WB Suggested Anti-CLPB Antibody Titration: 0.2-1 ug/ml; Positive Control: MCF7 cell lysate