

Product datasheet for **TA335440**

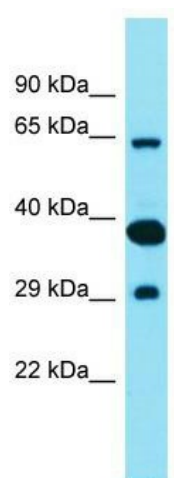
FAM83D Rabbit Polyclonal Antibody

Product data:

Product Type:	Primary Antibodies
Applications:	WB
Recommended Dilution:	WB
Reactivity:	Human
Host:	Rabbit
Isotype:	IgG
Clonality:	Polyclonal
Immunogen:	The immunogen for Anti-FAM83D Antibody is: synthetic peptide directed towards the C-terminal region of Human FAM83D. Synthetic peptide located within the following region: HFQSSNKFDHLTNRKPSKELTLGNLLRMRLARLSSTPRKADLDPEMPAE
Formulation:	Liquid. Purified antibody supplied in 1x PBS buffer with 0.09% (w/v) sodium azide and 2% sucrose.
Purification:	Affinity Purified
Conjugation:	Unconjugated
Storage:	Store at -20°C as received.
Stability:	Stable for 12 months from date of receipt.
Predicted Protein Size:	67 kDa
Gene Name:	family with sequence similarity 83 member D
Database Link:	NP_112181 Entrez Gene 81610 Human Q9H4H8
Background:	FAM83D is required for proper chromosome congression and alignment during mitosis and is required for targeting KIF22/KID to the spindle microtubules.
Synonyms:	C20orf129; CHICA; dj616B8.3
Note:	Immunogen Sequence Homology: Human: 100%; Mouse: 86%; Rabbit: 86%; Rat: 79%; Horse: 79%
Protein Families:	Druggable Genome

[View online »](#)

Product images:



Host: Rabbit; Target Name: FAM83D; Sample
Tissue: Fetal Lung lysates; Antibody Dilution: 1.0
ug/ml