

Product datasheet for **TA335438**

TEX14 Rabbit Polyclonal Antibody

Product data:

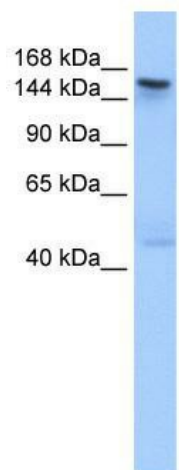
Product Type:	Primary Antibodies
Applications:	WB
Recommended Dilution:	WB
Reactivity:	Human
Host:	Rabbit
Isotype:	IgG
Clonality:	Polyclonal
Immunogen:	The immunogen for Anti-TEX14 Antibody: synthetic peptide directed towards the C terminal of human TEX14. Synthetic peptide located within the following region: ASSDTLVAVEKSYSTSSPIEEDFEGIQGAFAQPQVSGEEKFQMRKILGKN
Formulation:	Liquid. Purified antibody supplied in 1x PBS buffer with 0.09% (w/v) sodium azide and 2% sucrose.
Purification:	Affinity Purified
Conjugation:	Unconjugated
Storage:	Store at -20°C as received.
Stability:	Stable for 12 months from date of receipt.
Predicted Protein Size:	160 kDa
Gene Name:	testis expressed 14, intercellular bridge forming factor
Database Link:	NP_112562 Entrez Gene 56155 Human Q8IWB6
Background:	TEX14 belongs to the protein kinase superfamily. It contains 3 ANK repeats and 1 protein kinase domain. TEX14 is required for spermatogenesis and male fertility. It may be required for normal structure of the intercellular bridge that connects spermatocytes and spermatogonia. It has no protein kinase activity. This gene is similar to a mouse gene that is expressed in the testis.
Synonyms:	CT113
Note:	Immunogen Sequence Homology: Human: 100%; Horse: 86%; Rabbit: 86%; Rat: 79%



[View online »](#)

Protein Families: Protein Kinase

Product images:



WB Suggested Anti-TEX14 Antibody Titration: 0.2-1 ug/ml; Positive Control: Human Muscle