

Product datasheet for **TA335437**

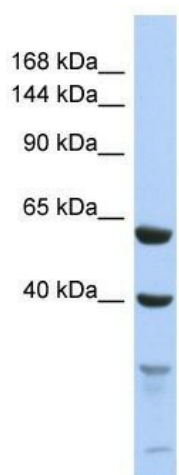
TEX11 Rabbit Polyclonal Antibody

Product data:

Product Type:	Primary Antibodies
Applications:	WB
Recommended Dilution:	WB
Reactivity:	Human
Host:	Rabbit
Isotype:	IgG
Clonality:	Polyclonal
Immunogen:	The immunogen for Anti-TEX11 Antibody is: synthetic peptide directed towards the C-terminal region of Human TEX11. Synthetic peptide located within the following region: SLAAQFALENGQQIVA EKALEYLAQHSE DQEQVLTAVKCLLRFLLPKIAE
Formulation:	Liquid. Purified antibody supplied in 1x PBS buffer with 0.09% (w/v) sodium azide and 2% sucrose. <i>Note that this product is shipped as lyophilized powder to China customers.</i>
Purification:	Affinity Purified
Conjugation:	Unconjugated
Storage:	Store at -20°C as received.
Stability:	Stable for 12 months from date of receipt.
Predicted Protein Size:	67 kDa
Gene Name:	testis expressed 11
Database Link:	NP_112566 Entrez Gene 56159 Human Q8IYF3
Background:	This gene is X-linked and is expressed in only male germ cells. Two alternatively spliced transcript variants encoding distinct isoforms have been found for this gene.
Synonyms:	SPGFX2; TGC1; TSGA3
Note:	Immunogen Sequence Homology: Human: 100%; Mouse: 92%; Dog: 86%; Horse: 86%; Bovine: 86%; Pig: 79%



[View online »](#)

Product images:

Host: Rabbit; Target Name: TEX11; Sample
Tissue: 293T whole cell lysates; Antibody Dilution:
1.0 ug/ml