

Product datasheet for TA335436

CCDC70 Rabbit Polyclonal Antibody

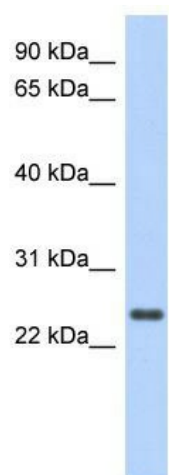
Product data:

Product Type:	Primary Antibodies
Applications:	WB
Recommended Dilution:	WB
Reactivity:	Human
Host:	Rabbit
Isotype:	IgG
Clonality:	Polyclonal
Immunogen:	The immunogen for Anti-CCDC70 Antibody: synthetic peptide directed towards the middle region of human CCDC70. Synthetic peptide located within the following region: TFRGKIHAFRGQILGFWEERPFWEKTFWKEEKSFWEKSFREEEKT
Formulation:	Liquid. Purified antibody supplied in 1x PBS buffer with 0.09% (w/v) sodium azide and 2% sucrose. <i>Note that this product is shipped as lyophilized powder to China customers.</i>
Purification:	Affinity Purified
Conjugation:	Unconjugated
Storage:	Store at -20°C as received.
Stability:	Stable for 12 months from date of receipt.
Predicted Protein Size:	26 kDa
Gene Name:	coiled-coil domain containing 70
Database Link:	NP_112580 Entrez Gene 83446 Human Q6NSX1
Background:	The specific function of CCDC70 is not yet known.
Synonyms:	DKFZp434K1172; FLJ25853
Note:	Immunogen Sequence Homology: Human: 100%; Rat: 93%; Mouse: 93%; Horse: 92%; Dog: 86%; Pig: 86%
Protein Families:	Secreted Protein



[View online »](#)

Product images:



WB Suggested Anti-CCDC70 Antibody Titration:
0.2-1 ug/ml; ELISA Titer: 1: 312500; Positive
Control: Human Stomach