

Product datasheet for **TA335433**

Aph 1b (APH1B) Rabbit Polyclonal Antibody

Product data:

| | |
|-------------------------|-----------------------------------------------------------------------------------------------------------------------------------------------------------------------------------------------------------------------------------------------------------------------------------------------------------------------------------------------------------------------------------------------------|
| Product Type: | Primary Antibodies |
| Applications: | WB |
| Recommended Dilution: | WB |
| Reactivity: | Human |
| Host: | Rabbit |
| Isotype: | IgG |
| Clonality: | Polyclonal |
| Immunogen: | The immunogen for Anti-APH1B Antibody is: synthetic peptide directed towards the N-terminal region of Human APH1B. Synthetic peptide located within the following region: IIDNKDGPTQKYLLIFGAFVSVYIQEMFRFAYYKLLKKASEGLKSINPGE |
| Formulation: | Liquid. Purified antibody supplied in 1x PBS buffer with 0.09% (w/v) sodium azide and 2% sucrose. <i>Note that this product is shipped as lyophilized powder to China customers.</i> |
| Purification: | Affinity Purified |
| Conjugation: | Unconjugated |
| Storage: | Store at -20°C as received. |
| Stability: | Stable for 12 months from date of receipt. |
| Predicted Protein Size: | 28 kDa |
| Gene Name: | aph-1 homolog B, gamma-secretase subunit |
| Database Link: | NP_112591 Entrez Gene 83464 Human Q8WW43 |
| Background: | This gene encodes a multi-pass transmembrane protein that is a functional component of the gamma-secretase complex, which also contains presenilin and nicastrin. This protein represents a stabilizing cofactor for the presenilin holoprotein in the complex. The gamma-secretase complex catalyzes the cleavage of integral proteins such as notch receptors and beta-amyloid precursor protein. |
| Synonyms: | APH-1B; PRO1328; PSFL; TAAV688 |

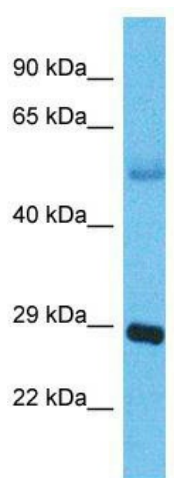


[View online »](#)

Note: Immunogen Sequence Homology: Human: 100%; Rabbit: 100%; Dog: 93%; Rat: 93%; Mouse: 93%; Bovine: 92%; Pig: 86%; Guinea pig: 86%

Protein Families: Transmembrane

Product images:



Host: Rabbit; Target Name: APH1B; Sample Tissue: Lung Tumor lysates; Antibody Dilution: 1.0 ug/ml