

Product datasheet for **TA335432**

Apg10 (ATG10) Rabbit Polyclonal Antibody

Product data:

Product Type:	Primary Antibodies
Applications:	WB
Recommended Dilution:	WB
Reactivity:	Human
Host:	Rabbit
Isotype:	IgG
Clonality:	Polyclonal
Immunogen:	The immunogen for Anti-ATG10 Antibody: synthetic peptide directed towards the C terminal of human ATG10. Synthetic peptide located within the following region: TPVLKNSQKINKNVNYITSWLSIVGPVVGLNLPLSYAKATSQDERNVP
Formulation:	Liquid. Purified antibody supplied in 1x PBS buffer with 0.09% (w/v) sodium azide and 2% sucrose. <i>Note that this product is shipped as lyophilized powder to China customers.</i>
Purification:	Affinity Purified
Conjugation:	Unconjugated
Storage:	Store at -20°C as received.
Stability:	Stable for 12 months from date of receipt.
Predicted Protein Size:	25 kDa
Gene Name:	autophagy related 10
Database Link:	NP_113670 Entrez Gene 83734 Human Q9H0Y0



[View online »](#)

Background:

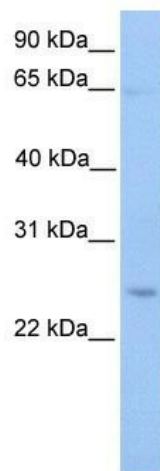
Autophagy is a process for the bulk degradation of cytosolic compartments by lysosomes. ATG10 is an E2-like enzyme involved in 2 ubiquitin-like modifications essential for autophagosome formation: ATG12-ATG5 conjugation and modification of a soluble form of MAP-LC3 (MAP1LC3A), a homolog of yeast Apg8, to a membrane-bound form. Autophagy is a process for the bulk degradation of cytosolic compartments by lysosomes. ATG10 is an E2-like enzyme involved in 2 ubiquitin-like modifications essential for autophagosome formation: ATG12 (MIM 609608)-ATG5 (MIM 604261) conjugation and modification of a soluble form of MAP-LC3 (MAP1LC3A; MIM 601242), a homolog of yeast Apg8, to a membrane-bound form (Nemoto et al., 2003 [PubMed 12890687]). [supplied by OMIM]

Synonyms:

APG10; APG10L; pp12616

Note:

Immunogen Sequence Homology: Rat: 100%; Human: 100%; Mouse: 100%; Bovine: 86%; Rabbit: 86%; Dog: 79%; Pig: 79%; Horse: 79%; Guinea pig: 79%

Product images:

WB Suggested Anti-ATG10 Antibody Titration: 0.2-1 ug/ml; Positive Control: HepG2 cell lysate