

Product datasheet for **TA335431**

MINDY4 Rabbit Polyclonal Antibody

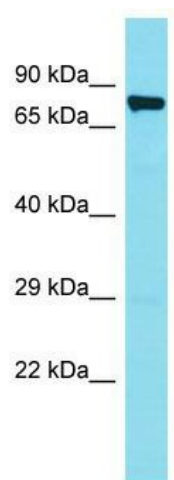
Product data:

Product Type:	Primary Antibodies
Applications:	WB
Recommended Dilution:	WB
Reactivity:	Human
Host:	Rabbit
Isotype:	IgG
Clonality:	Polyclonal
Immunogen:	The immunogen for Anti-FAM188B Antibody is: synthetic peptide directed towards the N-terminal region of Human FAM188B. Synthetic peptide located within the following region: HSEPSLDVKRMGENSRPKSGLIVRGMMMSGPIASSPQDSFHRHYLRSSPS
Formulation:	Liquid. Purified antibody supplied in 1x PBS buffer with 0.09% (w/v) sodium azide and 2% sucrose.
Purification:	Affinity Purified
Conjugation:	Unconjugated
Storage:	Store at -20°C as received.
Stability:	Stable for 12 months from date of receipt.
Predicted Protein Size:	84 kDa
Gene Name:	family with sequence similarity 188 member B
Database Link:	NP_115598 Entrez Gene 84182 Human Q4G0A6
Background:	The function of this protein remains unknown.
Synonyms:	C7orf67
Note:	Immunogen Sequence Homology: Human: 100%; Bovine: 85%; Pig: 79%; Rabbit: 79%; Guinea pig: 79%; Horse: 77%



[View online »](#)

Product images:



Host: Rabbit; Target Name: FAM188B; Sample
Tissue: HeLa Whole cell lysates; Antibody Dilution:
1.0 ug/ml