

Product datasheet for **TA335429**

Transmembrane Protein 175 (TMEM175) Rabbit Polyclonal Antibody

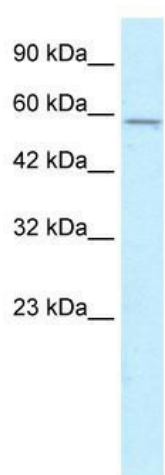
Product data:

Product Type:	Primary Antibodies
Applications:	WB
Recommended Dilution:	WB
Reactivity:	Human
Host:	Rabbit
Isotype:	IgG
Clonality:	Polyclonal
Immunogen:	The immunogen for Anti-MGC4618 Antibody: synthetic peptide directed towards the N terminal of human MGC4618. Synthetic peptide located within the following region: QRMLSFSDALLSIATVMILPVTHTTEISPEQQFDRSVQRLLATRIAVYLM
Formulation:	Liquid. Purified antibody supplied in 1x PBS buffer with 0.09% (w/v) sodium azide and 2% sucrose. <i>Note that this product is shipped as lyophilized powder to China customers.</i>
Purification:	Affinity Purified
Conjugation:	Unconjugated
Storage:	Store at -20°C as received.
Stability:	Stable for 12 months from date of receipt.
Predicted Protein Size:	56 kDa
Gene Name:	transmembrane protein 175
Database Link:	NP_115702 Entrez Gene 84286 Human Q9BSA9
Background:	The MGC4618 is a hypothetical protein found in Chromosome 4.
Synonyms:	hTMEM175
Note:	Immunogen Sequence Homology: Dog: 100%; Rat: 100%; Human: 100%; Mouse: 100%; Horse: 93%; Pig: 86%; Guinea pig: 86%
Protein Families:	Transmembrane



[View online »](#)

Product images:



WB Suggested Anti-MGC4618 Antibody Titration:
0.2-1 ug/ml; ELISA Titer: 1:1562500; Positive
Control: HepG2 cell lysate