

Product datasheet for **TA335427**

TMTC4 Rabbit Polyclonal Antibody

Product data:

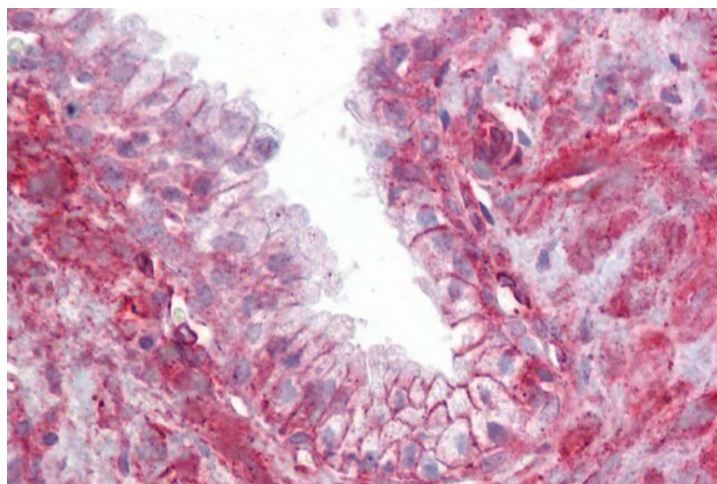
Product Type:	Primary Antibodies
Applications:	IHC, WB
Recommended Dilution:	WB, IHC
Reactivity:	Human
Host:	Rabbit
Isotype:	IgG
Clonality:	Polyclonal
Immunogen:	The immunogen for Anti-TMTC4 Antibody: synthetic peptide directed towards the N terminal of human TMTC4. Synthetic peptide located within the following region: NKDLQAETPLGDLWHHDFWGSRLSSNTSHKSYRPLTVLTFRINYLSGGF
Formulation:	Liquid. Purified antibody supplied in 1x PBS buffer with 0.09% (w/v) sodium azide and 2% sucrose.
Purification:	Affinity Purified
Conjugation:	Unconjugated
Storage:	Store at -20°C as received.
Stability:	Stable for 12 months from date of receipt.
Predicted Protein Size:	85 kDa
Gene Name:	transmembrane and tetratricopeptide repeat containing 4
Database Link:	NP_116202 Entrez Gene 84899 Human Q5T4D3
Background:	It belongs to the TMTC family. Its exact function remains unknown.
Synonyms:	FLJ14624; FLJ22153
Note:	Immunogen Sequence Homology: Dog: 100%; Pig: 100%; Rat: 100%; Horse: 100%; Human: 100%; Bovine: 100%; Rabbit: 100%; Mouse: 93%; Guinea pig: 93%; Zebrafish: 86%
Protein Families:	Transmembrane


[View online »](#)

Product images:



WB Suggested Anti-TMTC4 Antibody Titration:
0.2-1 ug/ml; ELISA Titer: 1: 312500; Positive
Control: MCF7 cell lysate



prostate