

## Product datasheet for **TA335426**

### **B3GALNT1 Rabbit Polyclonal Antibody**

#### **Product data:**

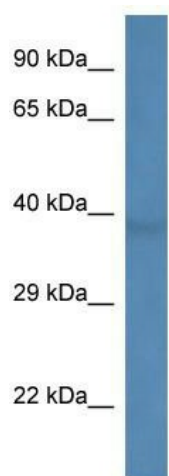
<b>Product Type:</b>	Primary Antibodies
<b>Applications:</b>	WB
<b>Recommended Dilution:</b>	WB
<b>Reactivity:</b>	Rat
<b>Host:</b>	Rabbit
<b>Isotype:</b>	IgG
<b>Clonality:</b>	Polyclonal
<b>Immunogen:</b>	The immunogen for Anti-B3galnt1 Antibody: synthetic peptide corresponding to a region of Rat. Synthetic peptide located within the following region: FTGYPLIENYSYRGFFHKNHISYQEYPFKVFPPYCSGLGYIMSGDLVPKI
<b>Formulation:</b>	Liquid. Purified antibody supplied in 1x PBS buffer with 0.09% (w/v) sodium azide and 2% sucrose. <i>Note that this product is shipped as lyophilized powder to China customers.</i>
<b>Purification:</b>	Affinity Purified
<b>Conjugation:</b>	Unconjugated
<b>Storage:</b>	Store at -20°C as received.
<b>Stability:</b>	Stable for 12 months from date of receipt.
<b>Predicted Protein Size:</b>	39 kDa
<b>Gene Name:</b>	beta-1,3-N-acetylgalactosaminyltransferase 1 (globoside blood group)
<b>Database Link:</b>	<a href="#">NP_149357</a> <a href="#">Entrez Gene 310508 Rat</a> <a href="#">O75752</a>
<b>Background:</b>	B3galnt1 transfers N-acetylgalactosamine onto globotriaosylceramide.
<b>Synonyms:</b>	B3GALT3; beta3Gal-T3; galT3; Gb4Cer; GLCT3; GLOB; P; P1
<b>Note:</b>	Immunogen Sequence Homology: Dog: 100%; Pig: 100%; Rat: 100%; Horse: 100%; Human: 100%; Mouse: 100%; Bovine: 100%; Rabbit: 100%; Guinea pig: 100%
<b>Protein Families:</b>	Transmembrane



[View online »](#)

Protein Pathways: Glycosphingolipid biosynthesis - globo series, Metabolic pathways

**Product images:**



WB Suggested Anti-B3galnt1 Antibody; Titration:  
1.0 ug/ml; Positive Control: Rat Muscle