

## Product datasheet for **TA335425**

### LDHAL6B Rabbit Polyclonal Antibody

#### Product data:

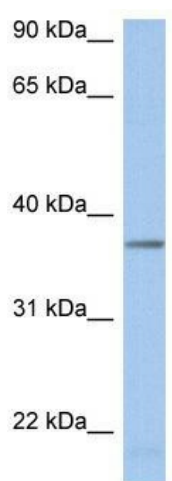
Product Type:	Primary Antibodies
Applications:	WB
Recommended Dilution:	WB
Reactivity:	Human
Host:	Rabbit
Isotype:	IgG
Clonality:	Polyclonal
Immunogen:	The immunogen for Anti-LDHAL6B Antibody: synthetic peptide directed towards the middle region of human LDHAL6B. Synthetic peptide located within the following region: SGVNIAGVPLKDLNSDIGTDKDPEQWKNVHKEVTATAYEIIKMKGYTSWA
Formulation:	Liquid. Purified antibody supplied in 1x PBS buffer with 0.09% (w/v) sodium azide and 2% sucrose. <i>Note that this product is shipped as lyophilized powder to China customers.</i>
Purification:	Affinity Purified
Conjugation:	Unconjugated
Storage:	Store at -20°C as received.
Stability:	Stable for 12 months from date of receipt.
Predicted Protein Size:	42 kDa
Gene Name:	lactate dehydrogenase A like 6B
Database Link:	<a href="#">NP_149972</a> <a href="#">Entrez Gene 92483 Human</a> <a href="#">Q9BYZ2</a>
Background:	The specific function of the protein remains unknown.
Synonyms:	LDH6B; LDHAL6; LDHL
Note:	Immunogen Sequence Homology: Human: 100%; Pig: 79%; Bovine: 79%; Rabbit: 79%; Rat: 77%



[View online »](#)

**Protein Pathways:** Cysteine and methionine metabolism, Glycolysis / Gluconeogenesis, Metabolic pathways, Propanoate metabolism, Pyruvate metabolism

**Product images:**



WB Suggested Anti-LDHAL6B Antibody Titration:  
0.2-1 ug/ml; ELISA Titer: 1: 12500; Positive  
Control: Human kidney