

## Product datasheet for **TA335423**

### GK2 Rabbit Polyclonal Antibody

#### Product data:

Product Type:	Primary Antibodies
Applications:	WB
Recommended Dilution:	WB
Reactivity:	Human
Host:	Rabbit
Isotype:	IgG
Clonality:	Polyclonal
Immunogen:	The immunogen for Anti-GK2 Antibody: synthetic peptide directed towards the N terminal of human GK2. Synthetic peptide located within the following region: DKLTGEPLYNAVWLDLRTQTTVEDLSKKIPGNSNFVKSKTGLPLSTYFS
Formulation:	Liquid. Purified antibody supplied in 1x PBS buffer with 0.09% (w/v) sodium azide and 2% sucrose. <i>Note that this product is shipped as lyophilized powder to China customers.</i>
Purification:	Affinity Purified
Conjugation:	Unconjugated
Storage:	Store at -20°C as received.
Stability:	Stable for 12 months from date of receipt.
Predicted Protein Size:	61 kDa
Gene Name:	glycerol kinase 2
Database Link:	<a href="#">NP_149991</a> <a href="#">Entrez Gene 2712 Human</a> <a href="#">Q14410</a>
Background:	GK2 belongs to the FGGY kinase family. GK2 is a key enzyme in the regulation of glycerol uptake and metabolism.
Synonyms:	GKP2; GKTA
Note:	Immunogen Sequence Homology: Human: 100%; Pig: 86%; Rat: 86%; Horse: 86%; Rabbit: 86%; Guinea pig: 86%; Dog: 85%; Mouse: 85%; Bovine: 85%

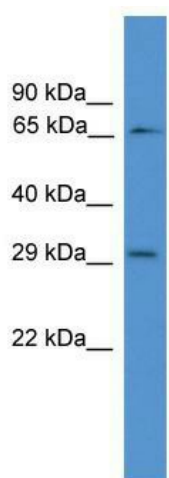


[View online »](#)

Protein Families: Druggable Genome

Protein Pathways: Glycerolipid metabolism, Metabolic pathways, PPAR signaling pathway

### Product images:



WB Suggested Anti-GK2 Antibody Titration: 0.2-1 ug/ml; ELISA Titer: 1: 1562500; Positive Control: Human Lung