

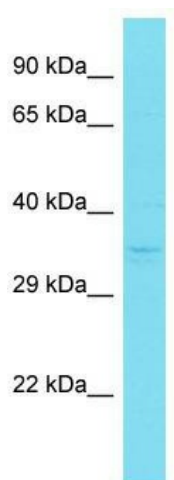
Product datasheet for TA335420

CENPL Rabbit Polyclonal Antibody

Product data:

Product Type:	Primary Antibodies
Applications:	WB
Recommended Dilution:	WB
Reactivity:	Human
Host:	Rabbit
Isotype:	IgG
Clonality:	Polyclonal
Immunogen:	The immunogen for Anti-CENPL Antibody is: synthetic peptide directed towards the N-terminal region of Human CENPL. Synthetic peptide located within the following region: AVEVGEDFNLIKVFSTLLGMKGTQRDPEAFLVQIVSKSQLPSENREGKVL
Formulation:	Liquid. Purified antibody supplied in 1x PBS buffer with 0.09% (w/v) sodium azide and 2% sucrose.
Purification:	Affinity Purified
Conjugation:	Unconjugated
Storage:	Store at -20°C as received.
Stability:	Stable for 12 months from date of receipt.
Predicted Protein Size:	38 kDa
Gene Name:	centromere protein L
Database Link:	NP_201576 Entrez Gene 91687 Human Q8N0S6
Background:	CENPL is a subunit of a CENPH -CENPI-associated centromeric complex that targets CENPA to centromeres and is required for proper kinetochore function and mitotic progression.
Synonyms:	C1orf155; CENP-L; dj383J4.3
Note:	Immunogen Sequence Homology: Dog: 100%; Pig: 100%; Horse: 100%; Human: 100%; Guinea pig: 100%; Rat: 93%; Rabbit: 92%; Mouse: 86%; Bovine: 86%


[View online »](#)

Product images:

Host: Rabbit; Target Name: CENPL; Sample
Tissue: Jurkat Whole Cell lysates; Antibody
Dilution: 1.0 ug/ml