

Product datasheet for **TA335419**

Myosin 1C (MYO1C) Rabbit Polyclonal Antibody

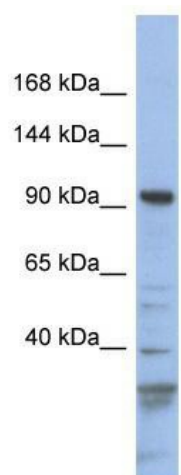
Product data:

Product Type:	Primary Antibodies
Applications:	WB
Recommended Dilution:	WB
Reactivity:	Human
Host:	Rabbit
Isotype:	IgG
Clonality:	Polyclonal
Immunogen:	The immunogen for Anti-MYO1C Antibody: synthetic peptide directed towards the N terminal of human MYO1C. Synthetic peptide located within the following region: NPVLEAFGNAKTLRNDNSSRFGKYMDVQDFDKGAPVGGHILSYLLEKSRV
Formulation:	Liquid. Purified antibody supplied in 1x PBS buffer with 0.09% (w/v) sodium azide and 2% sucrose. <i>Note that this product is shipped as lyophilized powder to China customers.</i>
Purification:	Affinity Purified
Conjugation:	Unconjugated
Storage:	Store at -20°C as received.
Stability:	Stable for 12 months from date of receipt.
Predicted Protein Size:	118 kDa
Gene Name:	myosin IC
Database Link:	NP_203693 Entrez Gene 4641 Human O00159
Background:	This gene encodes a member of the unconventional myosin protein family, which are actin-based molecular motors. The protein is found in the cytoplasm, and one isoform with a unique N-terminus is also found in the nucleus. The nuclear isoform associates with
Synonyms:	MMI-beta; MM1b; myr2; NMI
Note:	Immunogen Sequence Homology: Dog: 100%; Pig: 100%; Rat: 100%; Horse: 100%; Human: 100%; Mouse: 100%; Bovine: 100%; Rabbit: 100%; Zebrafish: 100%; Guinea pig: 100%



[View online »](#)

Product images:



WB Suggested Anti-MYO1C Antibody Titration:
0.2-1 ug/ml; ELISA Titer: 1:312500; Positive
Control: NCI-H226 cell lysate