

## Product datasheet for **TA335418**

### MVB12B Rabbit Polyclonal Antibody

#### Product data:

Product Type:	Primary Antibodies
Applications:	WB
Recommended Dilution:	WB
Reactivity:	Human
Host:	Rabbit
Isotype:	IgG
Clonality:	Polyclonal
Immunogen:	The immunogen for Anti-MVB12B Antibody is: synthetic peptide directed towards the C-terminal region of Human MVB12B. Synthetic peptide located within the following region: HISLTLPATFRGRNSTRTDYEQHSNLYAISAMDGVPFMISEKFSCVPES
Formulation:	Liquid. Purified antibody supplied in 1x PBS buffer with 0.09% (w/v) sodium azide and 2% sucrose. <i>Note that this product is shipped as lyophilized powder to China customers.</i>
Purification:	Affinity Purified
Conjugation:	Unconjugated
Storage:	Store at -20°C as received.
Stability:	Stable for 12 months from date of receipt.
Predicted Protein Size:	35 kDa
Gene Name:	multivesicular body subunit 12B
Database Link:	<a href="#">NP_258257</a> <a href="#">Entrez Gene 89853 Human</a> <a href="#">Q9H7P6</a>



[View online »](#)

**Background:**

The protein encoded by this gene is a component of the ESCRT-I complex, a heterotetramer, which mediates the sorting of ubiquitinated cargo protein from the plasma membrane to the endosomal vesicle. ESCRT-I complex plays an essential role in HIV budding and endosomal protein sorting. Depletion and overexpression of this and related protein (MVB12A) inhibit HIV-1 infectivity and induce unusual viral assembly defects, indicating a role for MVB12 subunits in regulating ESCRT-mediated virus budding. Alternatively spliced transcript variants encoding different isoforms have been found for this gene.

**Synonyms:**

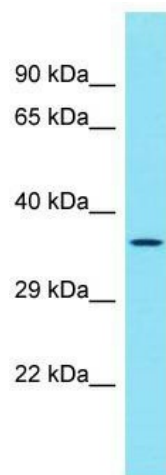
C9orf28; FAM125B

**Note:**

Immunogen Sequence Homology: Pig: 100%; Rat: 100%; Human: 100%; Guinea pig: 100%; Dog: 93%; Horse: 93%; Bovine: 93%; Rabbit: 93%; Mouse: 85%

**Protein Pathways:**

Endocytosis

**Product images:**

Host: Rabbit; Target Name: MVB12B; Sample Tissue: MDA-MB-435S Whole Cell lysates; Antibody Dilution: 1.0 ug/ml. There is BioGPS gene expression data showing that MVB12B is expressed in MDA-MB435