

## Product datasheet for **TA335417**

### TRIM41 Rabbit Polyclonal Antibody

#### Product data:

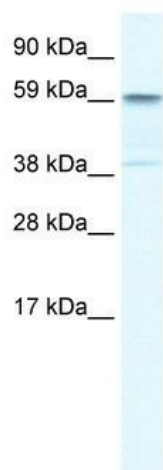
Product Type:	Primary Antibodies
Applications:	IHC, WB
Recommended Dilution:	WB, IHC
Reactivity:	Human
Host:	Rabbit
Isotype:	IgG
Clonality:	Polyclonal
Immunogen:	The immunogen for Anti-TRIM41 Antibody: synthetic peptide directed towards the C terminal of human TRIM41. Synthetic peptide located within the following region: AQSSTEQTLLSPSEKPRRFGVYLDYEAGRLGFYNAETLAHVHTFSA AFLG
Formulation:	Liquid. Purified antibody supplied in 1x PBS buffer with 0.09% (w/v) sodium azide and 2% sucrose. <i>Note that this product is shipped as lyophilized powder to China customers.</i>
Purification:	Affinity Purified
Conjugation:	Unconjugated
Storage:	Store at -20°C as received.
Stability:	Stable for 12 months from date of receipt.
Predicted Protein Size:	72 kDa
Gene Name:	tripartite motif containing 41
Database Link:	<a href="#">NP_291027</a> <a href="#">Entrez Gene 90933 Human</a> <a href="#">Q8WV44</a>
Background:	The TRIM41 gene encodes a protein observed in the cytoplasm and the nucleus. Nuclear transport is mediated by an N-terminal segment common to both alpha and beta isoforms, but independent of a classical nuclear localization signal sequence.
Synonyms:	RINCK
Note:	Immunogen Sequence Homology: Dog: 100%; Pig: 100%; Rat: 100%; Horse: 100%; Human: 100%; Bovine: 100%; Rabbit: 100%; Guinea pig: 100%; Mouse: 93%



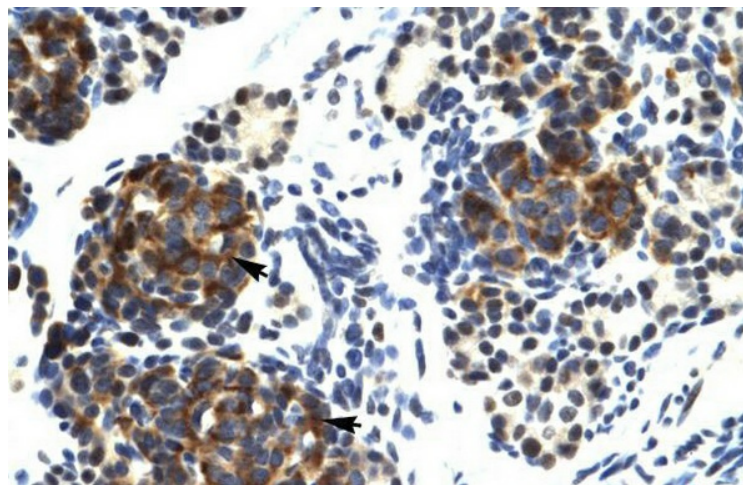
[View online »](#)

Protein Families: Druggable Genome

### Product images:



WB Suggested Anti-TRIM41 Antibody Titration:  
0.2-1 ug/ml; ELISA Titer: 1:1562500; Positive  
Control: Human Liver



Human Pancreas