

Product datasheet for **TA335415**

IFT122 Rabbit Polyclonal Antibody

Product data:

Product Type:	Primary Antibodies
Applications:	WB
Recommended Dilution:	WB
Reactivity:	Human, Mouse
Host:	Rabbit
Isotype:	IgG
Clonality:	Polyclonal
Immunogen:	The immunogen for Anti-IFT122 Antibody: synthetic peptide directed towards the C terminal of human IFT122. Synthetic peptide located within the following region: QADPAQKDTMLGKFYHFQRLAELYHGYHAIHRHTEDPFSVHRPETLFNIS
Formulation:	Liquid. Purified antibody supplied in 1x PBS buffer with 0.09% (w/v) sodium azide and 2% sucrose.
Purification:	Affinity Purified
Conjugation:	Unconjugated
Storage:	Store at -20°C as received.
Stability:	Stable for 12 months from date of receipt.
Predicted Protein Size:	129 kDa
Gene Name:	intraflagellar transport 122
Database Link:	NP_443716 Entrez Gene 55764 Human Q9HBG6



[View online »](#)

Background:

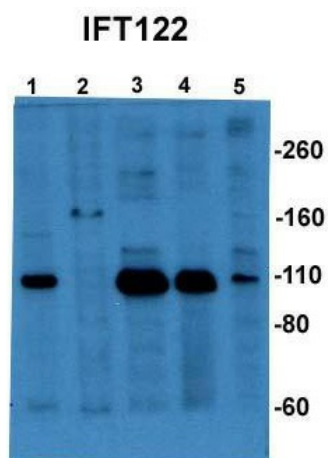
IFT122 is a member of the WD repeat protein family. WD repeats are minimally conserved regions of approximately 40 amino acids typically bracketed by gly-his and trp-asp (GH-WD), which may facilitate formation of heterotrimeric or multiprotein complexes. Members of this family are involved in a variety of cellular processes, including cell cycle progression, signal transduction, apoptosis, and gene regulation. IFT122 contains seven WD repeats and an AF-2 domain which function by recruiting coregulatory molecules and in transcriptional activation. This gene encodes a member of the WD repeat protein family. WD repeats are minimally conserved regions of approximately 40 amino acids typically bracketed by gly-his and trp-asp (GH-WD), which may facilitate formation of heterotrimeric or multiprotein complexes. Members of this family are involved in a variety of cellular processes, including cell cycle progression, signal transduction, apoptosis, and gene regulation. This cytoplasmic protein contains seven WD repeats and an AF-2 domain which function by recruiting coregulatory molecules and in transcriptional activation. Alternate transcriptional splice variants, encoding different isoforms, have been characterized.

Synonyms:

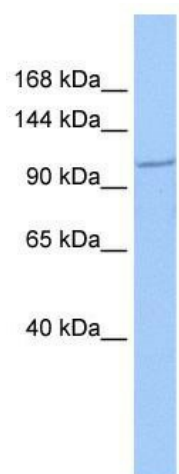
CED; CED1; SPG; WDR10; WDR10p; WDR140

Note:

Immunogen Sequence Homology: Human: 100%

Product images:

Sample Type: 1. Human 293FT cell line (15ug); 2. Murine IMCD3 cell line (15ug); 3. Human RPE cell line (15ug); 4. Bovine retina lysate cleared at 100,000Xg for 2 hours (15ug); 5. Mouse Brain Lysate (15ug); Primary Dilution: 1: 1000; Secondary Antitbody: goat anti-rabbit HRP; Scondary Dilution: 1: 10,000; Image Submitted By: Gerald Liew; Stanford University



WB Suggested Anti-IFT122 Antibody Titration: 0.2-1 ug/ml; Positive Control: 721_B cell lysate