

Product datasheet for TA335411

Spa17 Rabbit Polyclonal Antibody

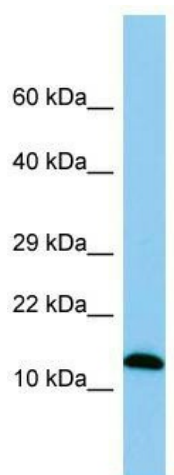
Product data:

Product Type:	Primary Antibodies
Applications:	WB
Recommended Dilution:	WB
Reactivity:	Rat
Host:	Rabbit
Isotype:	IgG
Clonality:	Polyclonal
Immunogen:	The immunogen for Anti-Spa17 Antibody is: synthetic peptide directed towards the middle region of Rat Spa17. Synthetic peptide located within the following region: AYFENLLEKREKTSFDPAEWGAKVEDRFYNNHAFKDPQEAKCEQEIAKA
Formulation:	Liquid. Purified antibody supplied in 1x PBS buffer with 0.09% (w/v) sodium azide and 2% sucrose.
Purification:	Affinity Purified
Conjugation:	Unconjugated
Storage:	Store at -20°C as received.
Stability:	Stable for 12 months from date of receipt.
Predicted Protein Size:	16 kDa
Gene Name:	sperm autoantigenic protein 17
Database Link:	NP_445934 Entrez Gene 85244 Rat
Background:	Spa17 is a component of sperm acrosome; Spa17 binds A-kinase anchoring protein 3 (Akap3) and is thought to be involved in fertilization by binding to the zona pellucida of the oocyte?
Synonyms:	CT22; SP17; SP17-1
Note:	Immunogen Sequence Homology: Dog: 100%; Pig: 100%; Rat: 100%; Horse: 100%; Human: 100%; Mouse: 100%; Rabbit: 100%; Guinea pig: 100%; Sheep: 93%; Bovine: 93%



[View online »](#)

Product images:



WB Suggested Anti-Spa17 Antibody; Titration: 1.0 ug/ml; Positive Control: Rat Small Intestine