

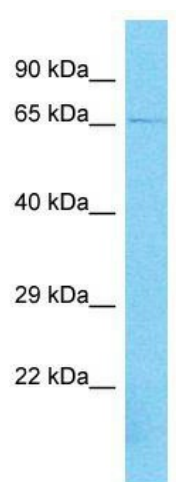
Product datasheet for TA335409

AGAP11 Rabbit Polyclonal Antibody

Product data:

Product Type:	Primary Antibodies
Applications:	WB
Recommended Dilution:	WB
Reactivity:	Human
Host:	Rabbit
Isotype:	IgG
Clonality:	Polyclonal
Immunogen:	The immunogen for Anti-AGAP11 Antibody is: synthetic peptide directed towards the middle region of Human AGAP11. Synthetic peptide located within the following region: AWVQAIQSQILASLQSCSSKSKSQLTSQSEAMALQSIQNMGRGNSHCVD
Formulation:	Liquid. Purified antibody supplied in 1x PBS buffer with 0.09% (w/v) sodium azide and 2% sucrose.
Purification:	Affinity Purified
Conjugation:	Unconjugated
Storage:	Store at -20°C as received.
Stability:	Stable for 12 months from date of receipt.
Predicted Protein Size:	60 kDa
Gene Name:	ArfGAP with GTPase domain, ankyrin repeat and PH domain 11
Database Link:	NP_597704 Entrez Gene 119385 Human Q8TF27
Background:	AGAP11 is a putative GTPase-activating protein.
Synonyms:	KIAA1975
Note:	Immunogen Sequence Homology: Human: 100%; Dog: 79%; Pig: 79%; Rat: 79%; Horse: 79%; Mouse: 79%; Bovine: 79%; Guinea pig: 79%


[View online »](#)

Product images:


Host: Rabbit; Target Name: AGAP11; Sample Tissue: 293T Whole Cell lysates; Antibody Dilution: 1.0 ug/ml. AGAP11 is supported by BioGPS gene expression data to be expressed in HEK293T