

Product datasheet for **TA335407**

Spata6 Rabbit Polyclonal Antibody

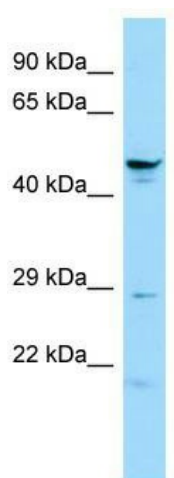
Product data:

Product Type:	Primary Antibodies
Applications:	WB
Recommended Dilution:	WB
Reactivity:	Rat
Host:	Rabbit
Isotype:	IgG
Clonality:	Polyclonal
Immunogen:	The immunogen for Anti-Spata6 Antibody is: synthetic peptide directed towards the C-terminal region of Rat Spata6. Synthetic peptide located within the following region: RVKDVLSHQAHGRHLCEERDPEKEDELELKRSLLYRDSAYDSDPEYSSF
Formulation:	Liquid. Purified antibody supplied in 1x PBS buffer with 0.09% (w/v) sodium azide and 2% sucrose. <i>Note that this product is shipped as lyophilized powder to China customers.</i>
Purification:	Affinity Purified
Conjugation:	Unconjugated
Storage:	Store at -20°C as received.
Stability:	Stable for 12 months from date of receipt.
Predicted Protein Size:	47 kDa
Gene Name:	spermatogenesis associated 6
Database Link:	NP_599219 Entrez Gene 171413 Rat
Background:	Spata6 may function as a molecular motor in meiosis and have a role in spermatogenesis.
Synonyms:	FLJ10007; SRF-1; SRF1
Note:	Immunogen Sequence Homology: Dog: 100%; Pig: 100%; Rat: 100%; Horse: 100%; Human: 100%; Mouse: 100%; Bovine: 100%; Rabbit: 100%; Guinea pig: 91%



[View online »](#)

Product images:



WB Suggested Anti-Spata6 Antibody; Titration: 1.0 ug/ml; Positive Control: Rat Testis