

Product datasheet for **TA335406**

FAM105B (OTULIN) Rabbit Polyclonal Antibody

Product data:

Product Type:	Primary Antibodies
Applications:	WB
Recommended Dilution:	WB
Reactivity:	Human
Host:	Rabbit
Isotype:	IgG
Clonality:	Polyclonal
Immunogen:	The immunogen for Anti-FAM105B Antibody is: synthetic peptide directed towards the C-terminal region of Human FAM105B. Synthetic peptide located within the following region: NRAIELYNDKEKGKEVPFFSVLLFARDTSNDPGQLLRNHLNQVGHTGGLE
Formulation:	Liquid. Purified antibody supplied in 1x PBS buffer with 0.09% (w/v) sodium azide and 2% sucrose.
Purification:	Affinity Purified
Conjugation:	Unconjugated
Storage:	Store at -20°C as received.
Stability:	Stable for 12 months from date of receipt.
Predicted Protein Size:	38 kDa
Gene Name:	OTU deubiquitinase with linear linkage specificity
Database Link:	NP_612357 Entrez Gene 90268 Human Q96BN8
Background:	FAM105B is a deubiquitinase that specifically removes linear ('M-1'-linked) polyubiquitin chains to substrates and acts as a regulator of angiogenesis. It associates with the LUBAC complex via direct interaction with RNF31 and counteracts its action by cleaving linear polyubiquitin chains to substrates. It is required during angiogenesis, craniofacial and neuronal development by regulating the canonical Wnt signaling together with the LUBAC complex. FAM105B acts as a negative regulator of NF-kappa-B by counteracting activity of the LUBAC complex

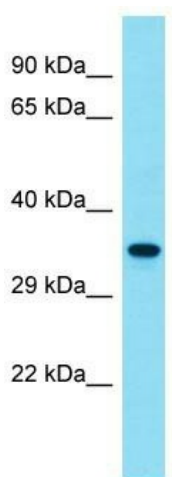


[View online »](#)

Synonyms: AIPDS; FAM105B; GUM

Note: Immunogen Sequence Homology: Human: 100%; Rat: 93%; Horse: 93%; Mouse: 93%; Rabbit: 93%; Dog: 86%; Pig: 86%; Bovine: 86%; Guinea pig: 85%

Product images:



Host: Rabbit

Target Name: FAM105B

Sample Tissue: 721_B Cell Lysate

Antibody Dilution: 1.0 µg/ml

Host: Rabbit; Target Name: FAM105B; Sample Tissue: 721_B Whole cell lysates; Antibody Dilution: 1.0 ug/ml