

## Product datasheet for **TA335404**

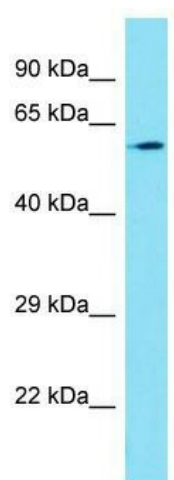
### **FAM114A1 Rabbit Polyclonal Antibody**

#### **Product data:**

Product Type:	Primary Antibodies
Applications:	WB
Recommended Dilution:	WB
Reactivity:	Human
Host:	Rabbit
Isotype:	IgG
Clonality:	Polyclonal
Immunogen:	The immunogen for Anti-FAM114A1 Antibody is: synthetic peptide directed towards the C-terminal region of Human FAM114A1. Synthetic peptide located within the following region: WVEEDQTVVSVSDVAKVSEEETKKEEKEEKSQDPQEDKKEEKTKTIEEVY
Formulation:	Liquid. Purified antibody supplied in 1x PBS buffer with 0.09% (w/v) sodium azide and 2% sucrose.
Purification:	Affinity Purified
Conjugation:	Unconjugated
Storage:	Store at -20°C as received.
Stability:	Stable for 12 months from date of receipt.
Predicted Protein Size:	61 kDa
Gene Name:	family with sequence similarity 114 member A1
Database Link:	<a href="#">NP_612398</a> <a href="#">Entrez Gene 92689 Human</a> <a href="#">Q8IWE2</a>
Background:	FAM114A1 may play a role in neuronal cell development.
Synonyms:	Noxp20
Note:	Immunogen Sequence Homology: Goat: 100%; Human: 100%; Yeast: 91%; Rat: 86%; Pig: 82%; Dog: 79%



[View online »](#)

**Product images:**

Host: Rabbit; Target Name: FAM114A1; Sample  
Tissue: A549 Whole Cell lysates; Antibody  
Dilution: 1.0 ug/ml